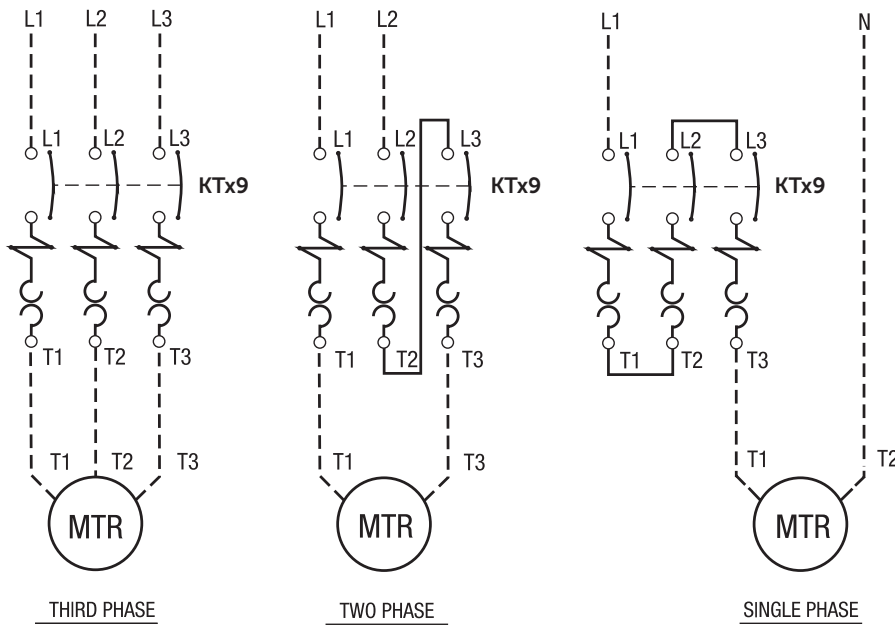
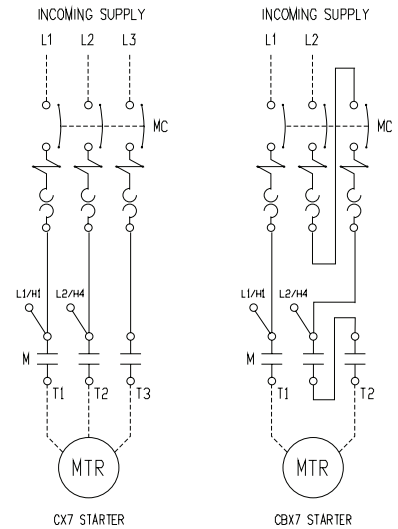
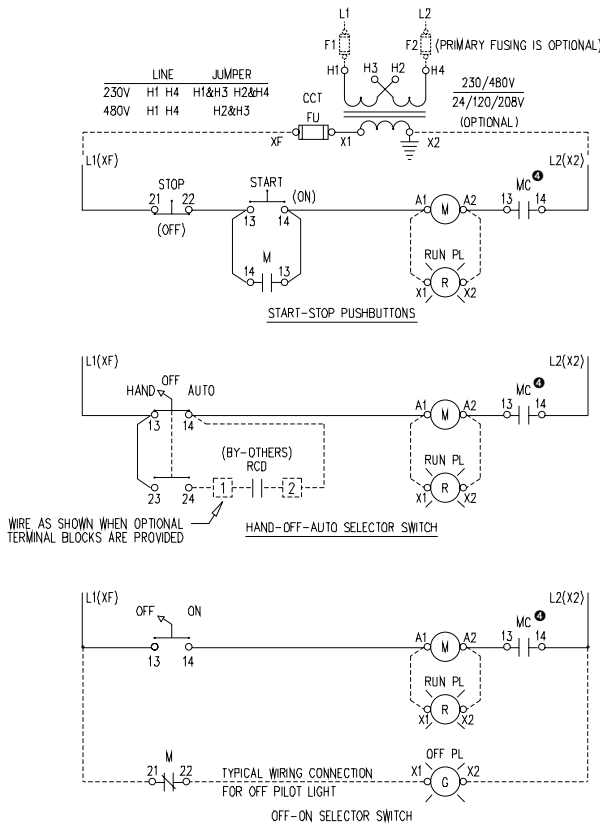


Single, Two and Three Phase Connection Diagram



**Type E/F Combination Controller Full Voltage Non-Reversing
AC Control with D7 Series Pilot Devices**

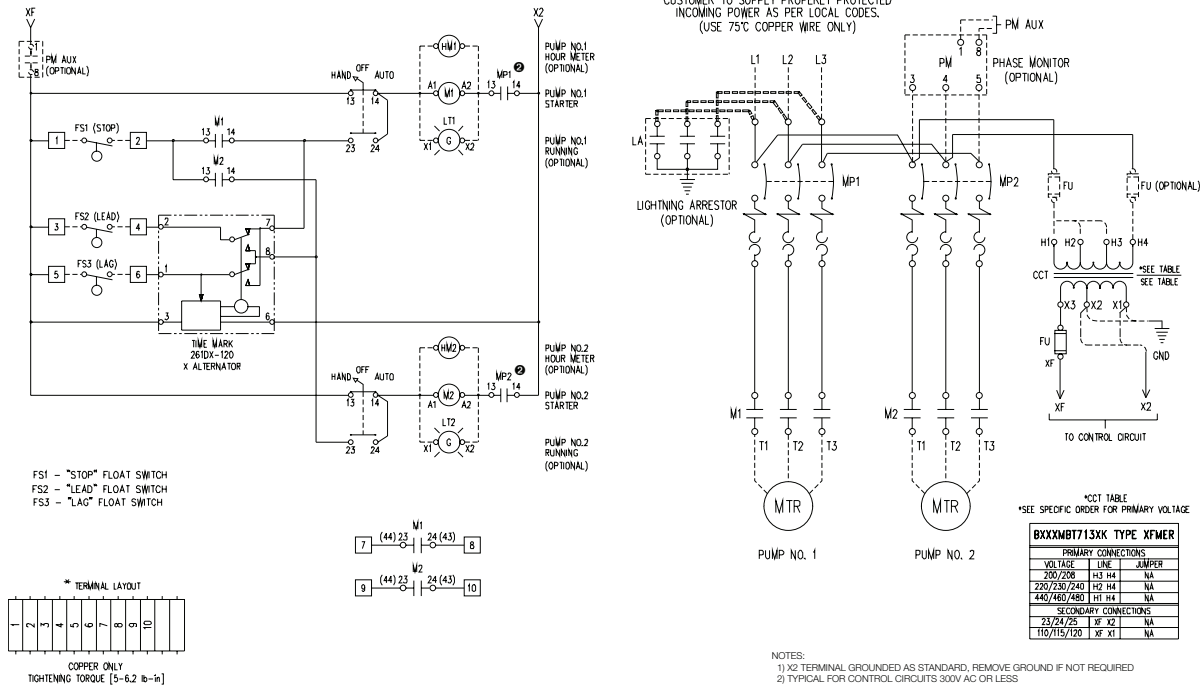


- NOTES:
- 1) RCD: STANDS FOR REMOTE CONTROL DEVICE BY CUSTOMER
 - 2) MC: KT9 TYPE E MOTOR CONTROLLER
 - 3) X2 TERMINAL GROUNDED AS STANDARD, REMOVE GROUND IF NOT REQUIRED
 - 4) TYPICAL FOR CONTROL CIRCUITS 300V AC OR LESS

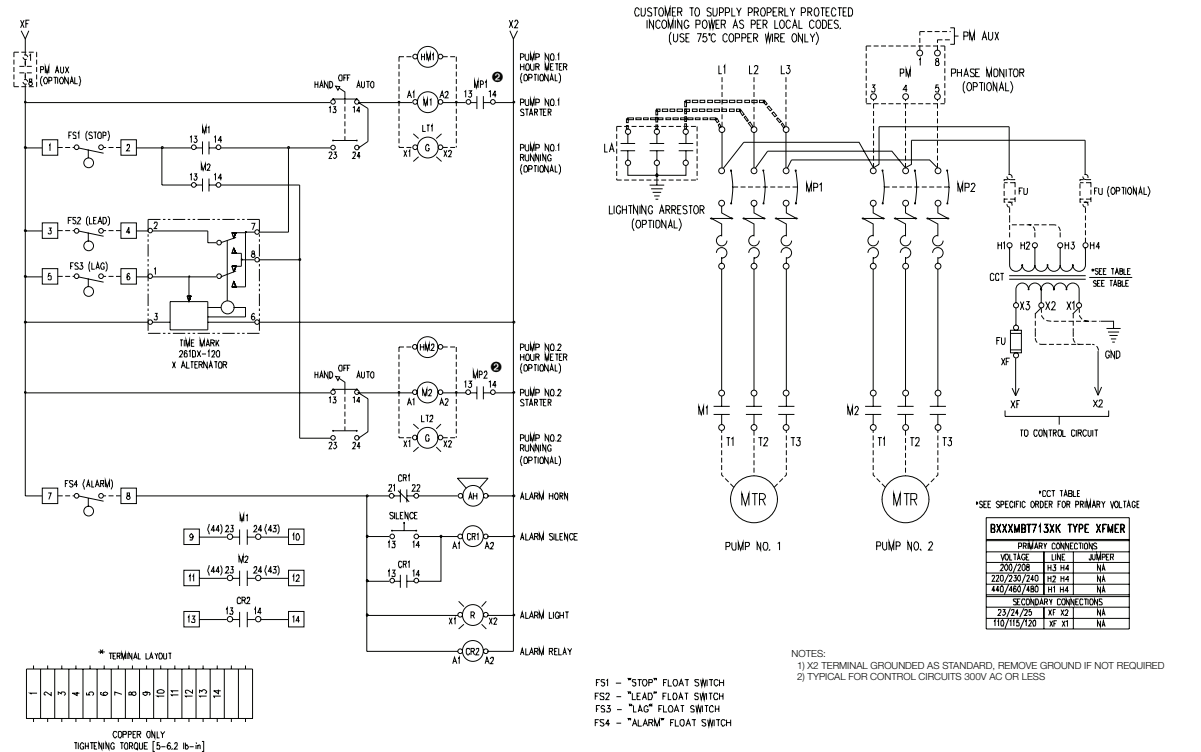
F

Enclosed Motor Circuit Controllers

KTA9 Type E/F Combination 3-PH FVNR Duplex Alternating Panel with H-O-A, Lead, Lag and Stop 1-Pole Float Switches

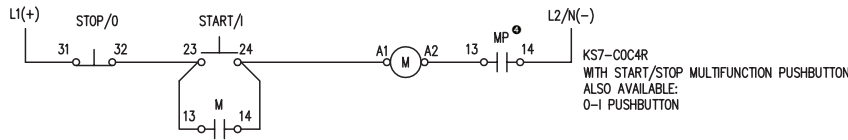


KTA9 Type E/F Combination 3-PH FVNR Duplex Alternating Panel with H-O-A, Alarm Circuit, Lead, Lag, Stop, 1-Pole Float Switches

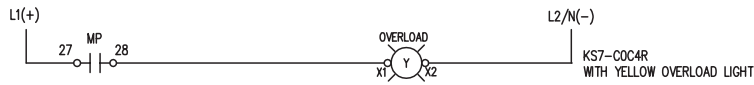
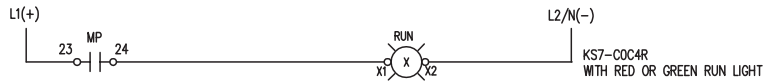
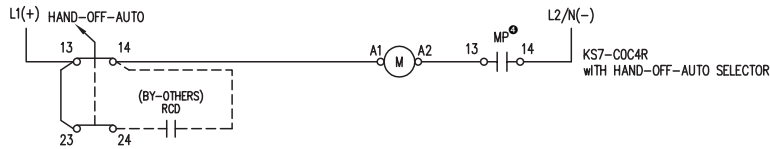
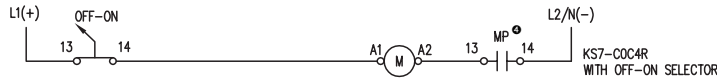
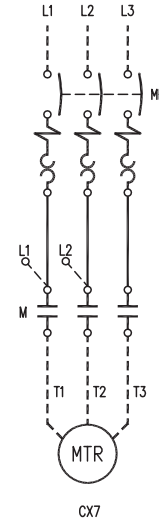


F
Enclosed Motor Circuit Controllers

ECombo/EComboPlus/CX7 KWIKstarters Non-Reversing



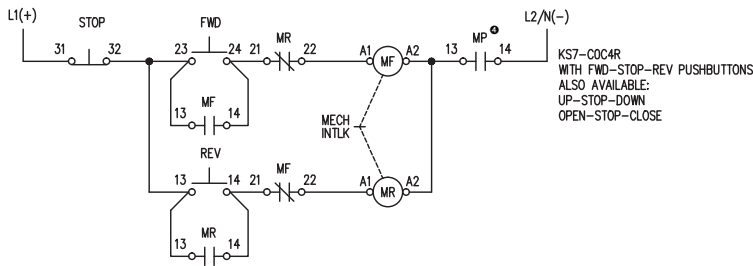
CUSTOMER TO SUPPLY PROPER BRANCH CIRCUIT PROTECTION AS PER LOCAL CODES. (USE 75°C COPPER WIRE ONLY)



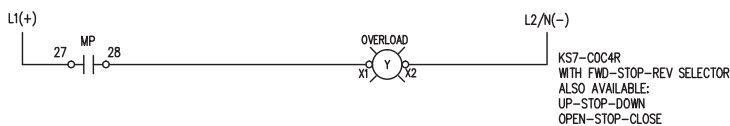
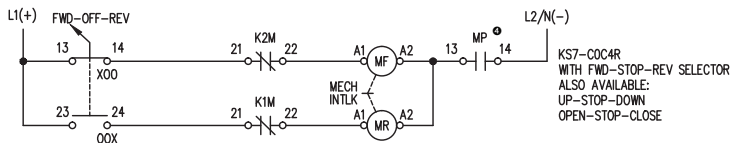
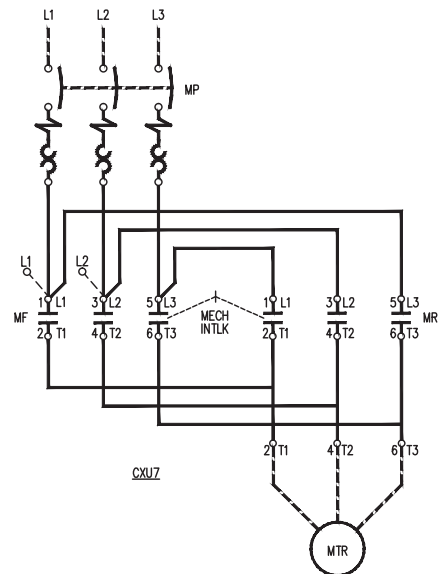
NOTES:

- 1) MP: KT9 "TYPE E" MOTOR CONTROLLER
- 2) DO NOT CONNECT A1-A2 TO L1-L2 UNLESS COIL VOLTAGE MATCHES LINE VOLTAGE
- 3) OPTIONAL RUN LIGHT, MAYBE RED OR GREEN
- 4) TYPICAL FORCONTROL CIRCUITS 300V AC OR LESS

ECombo/EComboPlus/CXU7 KWIKstarters Reversing



CUSTOMER WILL PROVIDE BRANCH CIRCUIT PROTECTION (F1) SEE THE APPLICATION INSTRUCTION SHEET - COMPONENT SELECTION TABLES FOR MAX. FUSE SIZE, CLASS, AND APPLICABLE SHORT CIRCUIT RATING (USE 75°C COPPER WIRE ONLY)

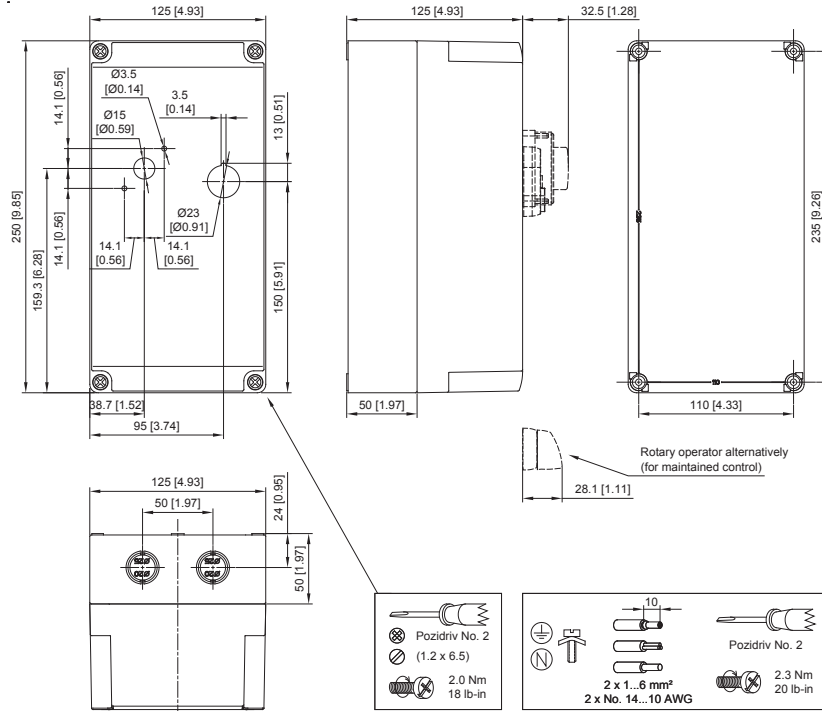


NOTES:

- 1) MECHANICAL INTERLOCK
- 2) MP: KT9 "TYPE E" MOTOR CONTROLLER
- 3) DO NOT CONNECT A1-A2 TO L1-L2 UNLESS COIL VOLTAGE MATCHES LINE VOLTAGE
- 4) TYPICAL FORCONTROL CIRCUITS 300V AC OR LESS

CX7/CXU7 KWIKstarter Enclosure KS7-COC4R (Dimension Code Q4)

Dimensions are in decimal inches. Dimensions not intended for manufacturing purposes.



Enclosure Dimensions

Dimensions are in decimal inches. Dimensions not intended for manufacturing purposes. See dimension drawings on next page.

TYPE 4/4X/12K - IP66 ENCLOSURE

Encl. ID Dim.	Figure No.	Enclosure Size			Mtg Depth D	Mtg Centers		Panel Size Sub-Pan	
		A	B	C		E	F		
AY	1	6.42	3.85	4.90	N/A	N/A	5.63	N/A	N/A

TYPE-4/4X/12 ENCLOSURE

Encl. ID Dim.	Figure No.	Enclosure Size			Mtg Depth D	Mtg Centers		Panel Size Sub-Pan	
		A	B	C		E	F		
Q5	2	7.00	5.03	5.02	4.3	4.21	6.18	N/A	N/A
Q6	3	7.00	7.00	6.02	5.3	6.18	6.18	N/A	N/A
Q7	4	11.87	7.31	10.6	7.23	6.54	11.10	N/A	N/A

TYPE-4/12 & 12 ENCLOSURES

Encl. ID Dim.	Figure No.	Enclosure Size			Mtg Depth D	Mtg Centers		Panel Size Sub-Pan		H
		A	B	C		E	F			
W6	5	9.84	7.87	8.24	5.31	5.31	9.13	9.09	7.13	-
W7	5	13.78	11.81	10.2	7.28	9.25	13.07	13.03	11.06	-
L	6	8	6	6	5.53	4	8.75	6.75	4.88	9.5

TYPE 4/7/9 ENCLOSURES

Encl. ID Dim.	Figure No.	Mtg. Dim.			Inside Dim. D	Outside Dim.				Conduit Entry Top & Bot
		A	B	C		E	F	G	H	
EX	7	3.25	7.75	3.5	6.0	3.0	4.56	7.06	6.25	0.75
EY	7	5.50	8.50	5.50	5.50	6.0	7.0	7.0	7.38	1.0
EZ	8	9.13	4.50	6.0	8.0	6.63	9.25	11.25	9.34	1.50

Enclosures

See Enclosure Dimension Charts on Previous Page.

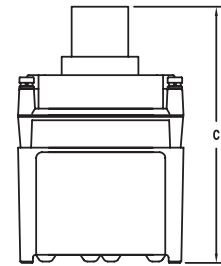
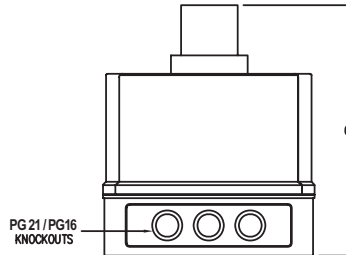
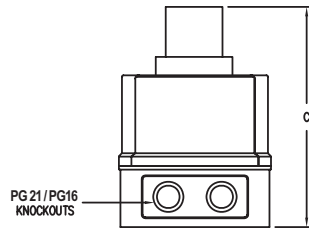
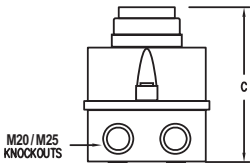
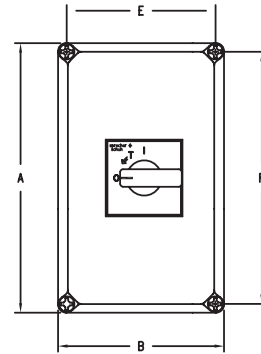
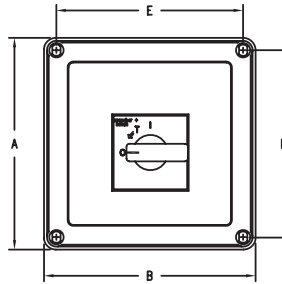
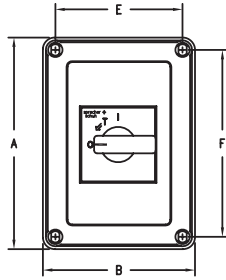
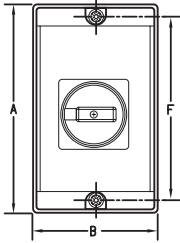


FIGURE NO. 1

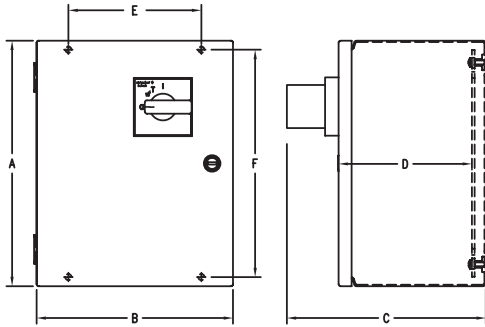
PG21/PG16
KNOCKOUTS

FIGURE NO. 2

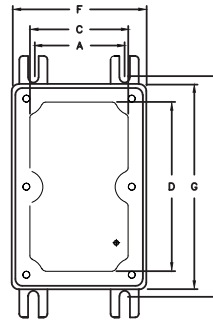
PG21/PG16
KNOCKOUTS

FIGURE NO. 3

FIGURE NO. 4



TYPE 4/12
FIGURE NO. 5



TYPE 12
FIGURE NO. 6

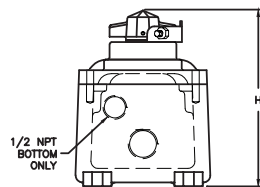
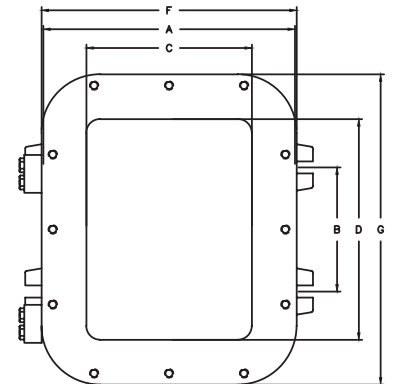


FIGURE NO. 7

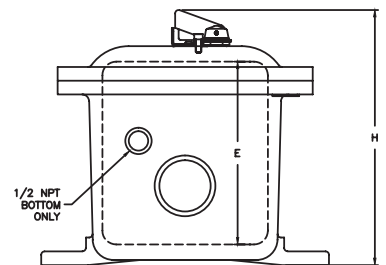


FIGURE NO. 8

F Enclosed Motor Circuit Controllers