

Combination Starters - Through the Door Operated

Smart and cost effective... for any application

Combination Starters



Sprecher + Schuh's through-the-door operated combination starters represent an economical alternative to the classic flange-operated combo solution. It is designed to meet rigid UL/NEC withstand specifications. Sprecher + Schuh has been building custom control panels with this design for years. Experience the durability of this product!

Starting with the best

At the heart of all combination starters is the Sprecher + Schuh CAT7 and CAT9 line of motor starters. These starters are compact and offer intermediate sizes to better match specific motor requirements. This equates to generous wiring space and less wasted horsepower capacity.

Top line protection...

Combination starters are equipped with Sprecher + Schuh's premium CEP7 solid state overload relay standard. Unlike traditional overload relays that indirectly sense motor current through heater elements, CEP7 solid state overload relays measure motor current directly through integrated current transformers and on board electronics. The electronics provide numerous advantages over electromechanical relays. Alternatively, the CT7N Thermal Overload Relay may also be selected.

Choice of Enclosures

Available enclosures include;

- Type 1 General Purpose
- Type 3R Raintight
- Type 12 Dusttight
- Type 4 Watertight
- Type 4X Corrosion Resistant

Choice of Disconnect

- Choices for disconnect include:
- Thermal Magnetic Molded Case Circuit Breaker (MCCB)
- L11 fusible or non-fusible Disconnect switch
- Motor Circuit Controller (Section F)



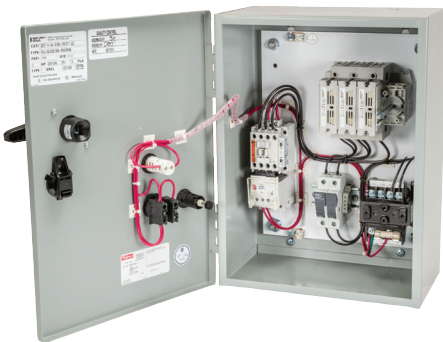
Thermal Magnetic Molded Case Circuit Breaker (MCCB)

The through-the-door operated combo MCCB is available to meet UL short circuit withstand specifications. An MCCB prevents single phasing by simultaneously opening all three phases when a fault occurs in any one phase. An MCCB can often be reset after the fault has been cleared.

Disconnect Switches

The through-the-door operated combo is available with the L11 disconnect switch. A mechanical door interlock system prevents the door from being opened when the disconnect is closed, and conversely, prevents the disconnect from being closed when the door is open. Both functions can be defeated for test and maintenance purposes. Other safety features include padlock provisions and a high visibility operating handle.

The L11 disconnect switch has a quick make/quick break, non-teasing action. The L11 fusible switch is suitable for interrupting up to 100,000 amperes when class "J" fuses are used. All L11 disconnect switches conform to UL 98 standards.



Series CAT7 with Thermal-Magnetic Circuit Breaker ①

Maximum Horsepower Three Phase				MCCB Amps	Open Type Catalog No. ②
200V	230V	460V	575V		
2	2	5	~	15	CAT7-9-*◆-TB15-BP
2	2	5	5	15	CAT7-9-*◆-TBH15-BP
~	~	~	7.5	20	CAT7-9-*◆-TBH20-BP
3	3	7.5	~	20	CAT7-12-*◆-TB20-BP
3	3	7.5	10	20	CAT7-12-*◆-TBH20-BP
~	5	10	~	30	CAT7-16-*◆-TB30-BP
5	~	~	~	35	CAT7-23-*◆-TB35-BP
5	~	~	15	35	CAT7-23-*◆-TBH35-BP
~	7.5	15	~	40	CAT7-23-*◆-TB40-BP
~	~	~	20	40	CAT7-30-*◆-TBH40-BP
7.5	10	20	25 ③	50	CAT7-30-*◆-TB50-BP
7.5	10	20	25	50	CAT7-30-*◆-TBH50-BP
10	10	25	30 ③	50	CAT7-37-*◆-TB50-BP
10	10	~	30	50	CAT7-37-*◆-TBH50-BP
~	~	30	~	70	CAT7-43-*◆-TB70-BP
~	15	~	~	80	CAT7-43-*◆-TB80-BP
15	20	40	40 ③	80	CAT7-55-*◆-TB80-BP
15	20	40	40	80	CAT7-55-*◆-TBH80-BP
~	~	~	40 ③	80	CAT7-60-*◆-TB80-BP
~	~	~	40	80	CAT7-60-*◆-TBH80-BP
15	20	40	50 ③	100	CAT7-60-*◆-TB100-BP
15	20	40	50	100	CAT7-60-*◆-TBH100-BP
20	25	50	60 ③	125	CAT7-72-*◆-TB125-BP
~	25	~	60	125	CAT7-72-*◆-TBH125-BP
25	30	60	~	125	CAT7-85-*◆-TB125-BP
~	30	~	75 ③	125	CAT7-97-*◆-TB125-BP
~	30	~	75	125	CAT7-97-*◆-TBH125-BP

Larger sizes available. Contact your Sprecher + Schuh representative.

Modifications (Factory Assembled) ①

Description	Add Suffix to Catalog Number *
CA7 Auxiliaries & Trip Contacts - Side Mount	
1 NO Auxiliary	-L10
1 NC Auxiliary	-L01
1 NO + 1 NC Auxiliary	-L11
2 NO Auxiliaries	-L20
2 NC Auxiliaries	-L02

* See price list for adder

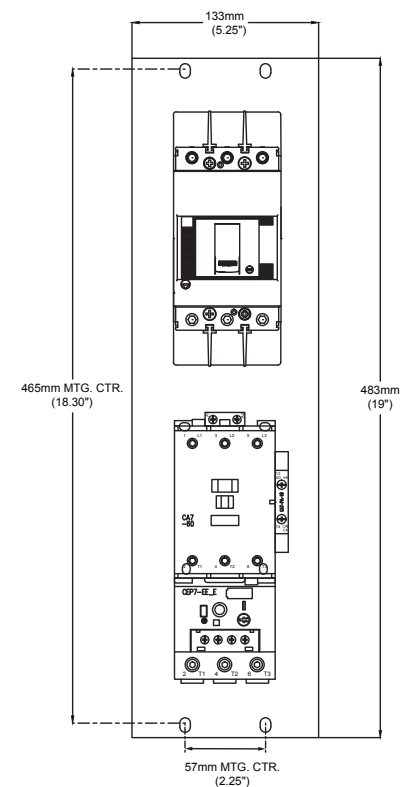
Ordering Instructions

Specify Catalog Number	
Replace (*) with Coil Code	See page C104
Replace (◆) with O/L Relay	See pages C105-C106



Open Combination Starters include the following:

- CA7 Contactor with 1 Normally Open Auxiliary contact
- CEP7 Overload Relay
- Thermal Magnetic Circuit Breaker
- 19 x 5.25" 12 gauge steel back pan with black polyester powder paint finish



NOTE: Catalog numbers and enclosure dimensions reflect contactors with AC coils. For DC coils, select Coil Code from the DC Coil Code table on page C104 and follow the instructions for modifying Catalog Numbers.

- ① Open type combination starters are limited to standard coils, overload selections, and modifications listed on this page. Contact factory for additional modifications.
- ② Applicable to 600Y/347V only. Refer to page C61 for 600V Delta enclosed solution. Contact your Sprecher + Schuh representative for an open type delta solution.
- ③ Selections above the orange line should consider an E-Combo starter. See page F58.

Combination Starters

Series CAT7 & CAT9 with Thermal-Magnetic Circuit Breaker

Maximum Horsepower Three Phase				MCCB Amps	Type 1 General Purpose	D I M	Type 12 [Type 3R ☉]	D I M	Type 4 Watertight	D I M	Type 4X Watertight Corrosion Resistant Non-metallic	D I M
200V	230V	460V	575V		Catalog No.	①	Catalog No.	①	Catalog No.	①	Catalog No.	①
					CAT		CAT		CAT		CAT	
2	2	5	~	15	7-9-*◆-TB15G0	C2	7-9-*◆-TB15D0	C3	7-9-*◆-TB15W0	C2	7-9-*◆-TB15C0	V2
3	3	7.5	~	20	7-12-*◆-TB20G0	C2	7-12-*◆-TB20D0	C3	7-12-*◆-TB20W0	C2	7-12-*◆-TB20C0	V2
~	5	10	~	30	7-16-*◆-TB30G0	C2	7-16-*◆-TB30D0	C3	7-16-*◆-TB30W0	C2	7-16-*◆-TB30C0	V2
5	~	~	~	35	7-23-*◆-TB35G0	C2	7-23-*◆-TB35D0	C3	7-23-*◆-TB35W0	C2	7-23-*◆-TB35C0	V2
~	7.5	15	~	40	7-23-*◆-TB40G0	C2	7-23-*◆-TB40D0	C3	7-23-*◆-TB40W0	C2	7-23-*◆-TB40C0	V2
~	~	~	20 ☉	40	7-30-*◆-TB40G0	C2	7-30-*◆-TB40D0	C3	7-30-*◆-TB40W0	C2	7-30-*◆-TB40C0	V2
7.5	10	20	25 ☉	50	7-30-*◆-TB50G0	C2	7-30-*◆-TB50D0	C3	7-30-*◆-TB50W0	C2	7-30-*◆-TB50C0	V2
10	~	25	30 ☉	60	7-37-*◆-TB60G0	C2	7-37-*◆-TB60D0	C3	7-37-*◆-TB60W0	C2	7-37-*◆-TB60C0	V2
~	~	30	~	70	7-43-*◆-TB70G0	C2	7-43-*◆-TB70D0	C3	7-43-*◆-TB70W0	C2	7-43-*◆-TB70C0	V2
~	15	~	~	80	7-43-*◆-TB80G0	C2	7-43-*◆-TB80D0	C3	7-43-*◆-TB80W0	C2	7-43-*◆-TB80C0	V2
15	20	40	40 ☉	80	7-55-*◆-TB80G0	C2	7-55-*◆-TB80D0	C3	7-55-*◆-TB80W0	C2	7-55-*◆-TB80C0	V2
~	~	~	40 ☉	80	7-60-*◆-TB80G0	D3	7-60-*◆-TB80D0	Q	7-60-*◆-TB80W0	Q	7-60-*◆-TB80C0	W2
15	20	40	50 ☉	100	7-60-*◆-TB100G0	D3	7-60-*◆-TB100D0	Q	7-60-*◆-TB100W0	Q	7-60-*◆-TB100C0	W2
20	25	50	60 ☉	125	7-72-*◆-TB125G0	D3	7-72-*◆-TB125D0	Q	7-72-*◆-TB125W0	Q	7-72-*◆-TB125C0	W2
25	30	60	~	125	7-85-*◆-TB125G0	D3	7-85-*◆-TB125D0	Q	7-85-*◆-TB125W0	Q	7-85-*◆-TB125C0	W2
~	~	~	75 ☉☉	150	7-97-*◆-TB150G0	D3	7-97-*◆-TB150D0	Q	7-97-*◆-TB150W0	Q	7-97-*◆-TB150C0	W2
30 ☉	~	75 ☉	~	175	7-97-*◆-TB175G0	D3	7-97-*◆-TB175D0	Q	7-97-*◆-TB175W0	Q	7-97-*◆-TB175C0	W2
30	~	75	~	175	9-116-*◆-TB175G0 ☉	E2	9-116-*◆-TB175D0 ☉	R2	9-116-*◆-TB175W0 ☉	R2	9-116-*◆-TB175C0 ☉	X1
~	40	~	100 ☉	200	9-116-*◆-TB200G0 ☉	E2	9-116-*◆-TB200D0 ☉	R2	9-116-*◆-TB200W0 ☉	R2	9-116-*◆-TB200C0 ☉	X1
40	~	100	125 ☉	225	9-146-*◆-TB225G0 ☉	G	9-146-*◆-TB225D0 ☉	R2	9-146-*◆-TB225W0 ☉	R2	9-146-*◆-TB225C0 ☉	X1
~	50	~	~	250	9-146-*◆-TB250G0 ☉	G	9-146-*◆-TB250D0 ☉	T	9-146-*◆-TB250W0 ☉	T	9-146-*◆-TB250C0 ☉	X1
50	60	125	150	300	9-190-*◆-TB300G0 ☉	H	9-190-*◆-TB300D0 ☉	T	9-190-*◆-TB300W0 ☉	T	9-190-*◆-TB300C0 ☉	X1
60	75	150	200	350	9-205-*◆-TB350G0 ☉	H	9-205-*◆-TB350D0 ☉	H	9-205-*◆-TB350W0 ☉	H	9-205-*◆-TB350C0 ☉	A2
75	~	175	~	400	9-265-*◆-TB400G0 ☉	H	9-265-*◆-TB400D0 ☉	H	9-265-*◆-TB400W0 ☉	H	9-265-*◆-TB400C0 ☉	A2
~	100	200	250	450	9-265-*◆-TB450G0 ☉	H	9-265-*◆-TB450D0 ☉	H	9-265-*◆-TB450W0 ☉	H	9-265-*◆-TB450C0 ☉	Y1
100	~	~	~	500	9-305-*◆-TB500G0 ☉	I	9-305-*◆-TB500D0 ☉	W	9-305-*◆-TB500W0 ☉	J	9-305-*◆-TB500C0 ☉	Y1
~	125	250	300	600	9-305-*◆-TB600G0 ☉	I	9-305-*◆-TB600D0 ☉	W	9-305-*◆-TB600W0 ☉	J	9-305-*◆-TB600C0 ☉	Y1
~	~	~	350	600	9-370-*◆-TB600G0 ☉	I	9-370-*◆-TB600D0 ☉	W	9-370-*◆-TB600W0 ☉	J	9-370-*◆-TB600C0 ☉	Y1
125	150	300	~	700	9-370-*◆-TB700G0 ☉	I	9-370-*◆-TB700D0 ☉	W	9-370-*◆-TB700W0 ☉	J	9-370-*◆-TB700C0 ☉	Y1
125	150	~	400	700	9-400-EI-*◆-TB700G0	J	9-400-EI-*◆-TB700D0	J	9-400-EI-*◆-TB700W0	J	9-400-EI-*◆-TB700C0	Y1
~	~	350	~	800	9-400-EI-*◆-TB800G0	J	9-400-EI-*◆-TB800D0	J	9-400-EI-*◆-TB800W0	J	9-400-EI-*◆-TB800C0	Y1
150	~	~	~	800	9-460-EI-*◆-TB800G0	J	9-460-EI-*◆-TB800D0	J	9-460-EI-*◆-TB800W0	J	9-460-EI-*◆-TB800C0	Y1
~	200	400	500	1000	9-460-EI-*◆-TB1000G0	J	9-460-EI-*◆-TB1000D0	J	9-460-EI-*◆-TB1000W0	J	9-460-EI-*◆-TB1000C0	Y1
200	~	~	600	1000	9-580-EI-*◆-TB1000G0	R/F	9-580-EI-*◆-TB1000D0	R/F	9-580-EI-*◆-TB1000W0	R/F	9-580-EI-*◆-TB1000C0	R/F
~	250	500	~	1200	9-580-EI-*◆-TB1200G0	R/F	9-580-EI-*◆-TB1200D0	R/F	9-580-EI-*◆-TB1200W0	R/F	9-580-EI-*◆-TB1200C0	R/F

Larger sizes available. Contact your Sprecher + Schuh representative.

NOTE: Catalog numbers and enclosure dimensions reflect contactors with AC coils. For DC coils, select Coil Code from the DC Coil Code table on page C104 and follow the instructions for modifying catalog numbers.

- ① Dimensional information starts on page C122.
- ② For Type 3R outdoor applications, replace "D" in catalog number with an "R". Dimensions may change. For example number CAT7-30-*◆-TB50D0 becomes CAT7-30-*◆-TB50R0. Price remains the same.
- ③ Applicable to 600Y/347V only. Refer to page C61 for 600V Delta solution.
- ④ The short circuit and kAIC is relegated to the contactor's 10kA. Contact your Sprecher + Schuh representative for a higher kAIC.
- ⑤ CAT9-116...CAT9-370 starters are available with "EI" option for PLC interface. Change catalog number to include "-EI". Example: CAT9-116-*◆-TB175G0 becomes CAT9-116-EI-*◆-TB175G0. See page C104 for price adder.

Ordering Instructions

Specify Catalog Number	
Replace (*) with Coil Code	See page C104
Replace (◆) with O/L Relay	See pages C105-C106
Factory Modifications available	See pages C107-C111

Series CAT7 & CAT9 with Thermal-Magnetic Circuit Breaker - 600V Delta

Maximum Horsepower Three Phase				MCCB Amps	Type 1 General Purpose	D I M	Type 12 [Type 3R Ⓣ] Industrial Dusttight	D I M	Type 4 Watertight	D I M	Type 4X Watertight Corrosion Resistant Non-metallic	D I M
200V	230V	460V	575V		Catalog No.	Ⓛ	Catalog No.	Ⓛ	Catalog No.	Ⓛ	Catalog No.	Ⓛ
					CAT		CAT		CAT		CAT	
2	2	5	5	15	7-9-*◆-TBH15G0	C2	7-9-*◆-TBH15D0	C3	7-9-*◆-TBH15W0	C2	7-9-*◆-TBH15C0	V2
~	~	~	7.5	20	7-9-*◆-TBH20G0	C2	7-9-*◆-TBH20D0	C3	7-9-*◆-TBH20W0	C2	7-9-*◆-TBH20C0	V2
3	3	7.5	10	20	7-12-*◆-TBH20G0	C2	7-12-*◆-TBH20D0	C3	7-12-*◆-TBH20W0	C2	7-12-*◆-TBH20C0	V2
5	~	~	15	35	7-23-*◆-TBH35G0	C2	7-23-*◆-TBH35D0	C3	7-23-*◆-TBH35W0	C2	7-23-*◆-TBH35C0	V2
~	~	~	20	40	7-30-*◆-TBH40G0	C2	7-30-*◆-TBH40D0	C3	7-30-*◆-TBH40W0	C2	7-30-*◆-TBH40C0	V2
7.5	10	20	25	50	7-30-*◆-TBH50G0	C2	7-30-*◆-TBH50D0	C3	7-30-*◆-TBH50W0	C2	7-30-*◆-TBH50C0	V2
10	~	25	30	60	7-37-*◆-TBH60G0	C2	7-37-*◆-TBH60D0	C3	7-37-*◆-TBH60W0	C2	7-37-*◆-TBH60C0	V2
15	20	40	40	80	7-55-*◆-TBH80G0	C2	7-55-*◆-TBH80D0	C3	7-55-*◆-TBH80W0	C2	7-55-*◆-TBH80C0	V2
~	~	~	40	80	7-60-*◆-TBH80G0	D3	7-60-*◆-TBH80D0	Q	7-60-*◆-TBH80W0	Q	7-60-*◆-TBH80C0	W2
15	20	40	50	100	7-60-*◆-TBH100G0	D3	7-60-*◆-TBH100D0	Q	7-60-*◆-TBH100W0	Q	7-60-*◆-TBH100C0	W2
~	25	~	60	125	7-72-*◆-TBH125G0	D3	7-72-*◆-TBH125D0	Q	7-72-*◆-TBH125W0	Q	7-72-*◆-TBH125C0	W2
~	~	~	75 Ⓣ	150	7-97-*◆-TBH150G0	D3	7-97-*◆-TBH150D0	Q	7-97-*◆-TBH150W0	Q	7-97-*◆-TBH150C0	W2
30	~	75	~	175	9-116-*◆-TBH175G0 Ⓣ	E2	9-116-*◆-TBH175D0 Ⓣ	R2	9-116-*◆-TBH175W0 Ⓣ	R2	9-116-*◆-TBH175C0 Ⓣ	X1
~	40	~	100 Ⓣ	200	9-116-*◆-TBH200G0 Ⓣ	E2	9-116-*◆-TBH200D0 Ⓣ	R2	9-116-*◆-TBH200W0 Ⓣ	R2	9-116-*◆-TBH200C0 Ⓣ	X1
40	~	100	125 Ⓣ	225	9-146-*◆-TBH225G0 Ⓣ	G	9-146-*◆-TBH225D0 Ⓣ	T	9-146-*◆-TBH225W0 Ⓣ	T	9-146-*◆-TBH225C0 Ⓣ	X1

Combination Starters

Ordering Instructions

Specify Catalog Number	
Replace (*) with Coil Code	See page C104
Replace (◆) with O/L Relay	See pages C105-C106
Factory Modifications available	See pages C107-C111

NOTE: Catalog numbers and enclosure dimensions reflect contactors with AC coils. For DC coils, select Coil Code from the DC Coil Code table on page C104 and follow the instructions for modifying catalog numbers.

- Ⓛ Dimensional information starts on page C122.
- Ⓣ For Type 3R outdoor applications, replace "D" in catalog number with an "R". Dimensions may change. For example number CAT7-30-*◆-TBH50D0 becomes CAT7-30-*◆-TBH50R0. Price remains the same.
- Ⓢ The short circuit and kAIC is relegated to the contactor's 10kA. Contact your Sprecher + Schuh representative for a higher kAIC.
- Ⓣ CAT9-116...CAT9-370 starters are available with "EI" option for PLC interface. Change catalog number to include "-EI". Example: CAT9-116-*◆-TBH175G0 becomes CAT9-116-EI-*◆-TBH175G0. See page C104 for price adder.

Series CAUT7 & CAUT9 with Thermal-Magnetic Circuit Breaker

Maximum Horsepower Three Phase				MCCB Amps	Type 1 General Purpose	D I M	Type 12 [Type 3R ②]	D I M	Type 4 Watertight	D I M	Type 4X Watertight Corrosion Resistant Non-metallic	D I M
200V	230V	460V	575V		Catalog No.	①	Catalog No.	①	Catalog No.	①	Catalog No.	①
					CAUT		CAUT		CAUT		CAUT	
2	2	5	~	15	7-9-*◆-TB15G0	D3	7-9-*◆-TB15D0	Q	7-9-*◆-TB15W0	Q	7-9-*◆-TB15C0	V2
3	3	7.5	~	20	7-12-*◆-TB20G0	D3	7-12-*◆-TB20D0	Q	7-12-*◆-TB20W0	Q	7-12-*◆-TB20C0	V2
~	5	10	~	30	7-16-*◆-TB30G0	D3	7-16-*◆-TB30D0	Q	7-16-*◆-TB30W0	Q	7-16-*◆-TB30C0	V2
5	~	~	~	35	7-23-*◆-TB35G0	D3	7-23-*◆-TB35D0	Q	7-23-*◆-TB35W0	Q	7-23-*◆-TB35C0	V2
~	7.5	15	~	40	7-23-*◆-TB40G0	D3	7-23-*◆-TB40D0	Q	7-23-*◆-TB40W0	Q	7-23-*◆-TB40C0	V2
~	~	~	20 ③	40	7-30-*◆-TB40G0	D3	7-30-*◆-TB40D0	Q	7-30-*◆-TB40W0	Q	7-30-*◆-TB40C0	V2
7.5	10	20	25 ③	50	7-30-*◆-TB50G0	D3	7-30-*◆-TB50D0	Q	7-30-*◆-TB50W0	Q	7-30-*◆-TB50C0	V2
10	~	25	30 ③	60	7-37-*◆-TB60G0	D3	7-37-*◆-TB60D0	Q	7-37-*◆-TB60W0	Q	7-37-*◆-TB60C0	V2
~	~	30	~	70	7-43-*◆-TB70G0	D3	7-43-*◆-TB70D0	Q	7-43-*◆-TB70W0	Q	7-43-*◆-TB70C0	V2
~	15	~	~	80	7-43-*◆-TB80G0	D3	7-43-*◆-TB80D0	Q	7-43-*◆-TB80W0	Q	7-43-*◆-TB80C0	V2
15	20	40	40 ③	80	7-55-*◆-TB80G0	D3	7-55-*◆-TB80D0	Q	7-55-*◆-TB80W0	Q	7-55-*◆-TB80C0	V2
~	~	~	40 ③	80	7-60-*◆-TB80G0	D3	7-60-*◆-TB80D0	Q	7-60-*◆-TB80W0	Q	7-60-*◆-TB80C0	W2
20	25	50	60 ③	125	7-72-*◆-TB125G0	D3	7-72-*◆-TB125D0	Q	7-72-*◆-TB125W0	Q	7-72-*◆-TB125C0	W2
25	30	60	~	125	7-85-*◆-TB125G0	D3	7-85-*◆-TB125D0	Q	7-85-*◆-TB125W0	Q	7-85-*◆-TB125C0	W2
~	~	~	75 ③④	150	7-97-*◆-TB150G0	D3	7-97-*◆-TB150D0	Q	7-97-*◆-TB150W0	Q	7-97-*◆-TB150C0	W2
30 ④	~	75 ④	~	125	7-97-*◆-TB175G0	D3	7-97-*◆-TB175D0	Q	7-97-*◆-TB175W0	Q	7-97-*◆-TB175C0	W2
30	~	75	~	175	9-116-*◆-TB175G0 ⑤	E2	9-116-*◆-TB175D0 ⑤	R2	9-116-*◆-TB175W0 ⑤	R2	9-116-*◆-TB175C0 ⑤	X1
~	40	~	100 ⑤	200	9-116-*◆-TB200G0 ⑤	E2	9-116-*◆-TB200D0 ⑤	R2	9-116-*◆-TB200W0 ⑤	R2	9-116-*◆-TB200C0 ⑤	X1
40	~	100	125 ⑤	225	9-146-*◆-TB225G0 ⑤	G	9-146-*◆-TB225D0 ⑤	T	9-146-*◆-TB225W0 ⑤	T	9-146-*◆-TB225C0 ⑤	X1
~	50	~	~	250	9-146-*◆-TB250G0 ⑤	G	9-146-*◆-TB250D0 ⑤	T	9-146-*◆-TB250W0 ⑤	T	9-146-*◆-TB250C0 ⑤	X1
50	60	125	150	300	9-190-*◆-TB300G0 ⑤	H	9-190-*◆-TB300D0 ⑤	H	9-190-*◆-TB300W0 ⑤	H	9-190-*◆-TB300C0 ⑤	A2
60	75	150	200	350	9-205-*◆-TB350G0 ⑤	H	9-205-*◆-TB350D0 ⑤	H	9-205-*◆-TB350W0 ⑤	H	9-205-*◆-TB350C0 ⑤	Y1
75	~	175	~	400	9-265-*◆-TB400G0 ⑤	I	9-265-*◆-TB400D0 ⑤	W	9-265-*◆-TB400W0 ⑤	J	9-265-*◆-TB400C0 ⑤	Y1
~	100	200	250	450	9-265-*◆-TB450G0 ⑤	I	9-265-*◆-TB450D0 ⑤	W	9-265-*◆-TB450W0 ⑤	J	9-265-*◆-TB450C0 ⑤	Y1
100	~	~	~	500	9-305-*◆-TB500G0 ⑤	I	9-305-*◆-TB500D0 ⑤	W	9-305-*◆-TB500W0 ⑤	J	9-305-*◆-TB500C0 ⑤	Y1
~	125	250	300	600	9-305-*◆-TB600G0 ⑤	I	9-305-*◆-TB600D0 ⑤	W	9-305-*◆-TB600W0 ⑤	J	9-305-*◆-TB600C0 ⑤	Y1
~	~	~	350	600	9-370-*◆-TB600G0 ⑤	J	9-370-*◆-TB600D0 ⑤	W	9-370-*◆-TB600W0 ⑤	J	9-370-*◆-TB600C0 ⑤	Y1
125	150	300	~	700	9-370-*◆-TB700G0 ⑤	J	9-370-*◆-TB700D0 ⑤	W	9-370-*◆-TB700W0 ⑤	J	9-370-*◆-TB700C0 ⑤	Y1
125	150	~	400	700	9-400-EI-*◆-TB700G0	J	9-400-EI-*◆-TB700D0	J	9-400-EI-*◆-TB700W0	J	9-400-EI-*◆-TB700C0	Y1
~	~	350	~	800	9-400-EI-*◆-TB800G0	J	9-400-EI-*◆-TB800D0	J	9-400-EI-*◆-TB800W0	J	9-400-EI-*◆-TB800C0	Y1
150	~	~	~	800	9-460-EI-*◆-TB800G0	J	9-460-EI-*◆-TB800D0	J	9-460-EI-*◆-TB800W0	J	9-460-EI-*◆-TB800C0	Y1
~	200	400	500	1000	9-460-EI-*◆-TB1000G0	J	9-460-EI-*◆-TB1000D0	J	9-460-EI-*◆-TB1000W0	J	9-460-EI-*◆-TB1000C0	Y1
200	~	~	600	1000	9-580-EI-*◆-TB1000G0	R/F	9-580-EI-*◆-TB1000D0	R/F	9-580-EI-*◆-TB1000W0	R/F	9-580-EI-*◆-TB1000C0	R/F
~	250	500	~	1200	9-580-EI-*◆-TB1200G0	R/F	9-580-EI-*◆-TB1200D0	R/F	9-580-EI-*◆-TB1200W0	R/F	9-580-EI-*◆-TB1200C0	R/F

Larger sizes available. Contact your Sprecher + Schuh representative.

NOTE: Catalog numbers and enclosure dimensions reflect contactors with AC coils. For DC coils, select Coil Code from the DC Coil Code table on page C104 and follow the instructions for modifying catalog numbers.

- ① Dimensional information starts on page C122.
- ② For Type 3R outdoor applications, replace "D" in catalog number with an "R". Dimensions may change. For example number CAUT7-30-*◆-TB50D0 becomes CAUT7-30-*◆-TB50R0. Price remains the same.
- ③ Applicable to 600Y/347V only. Refer to page C63 for 600V Delta solution.
- ④ The short circuit and kAIC is relegated to the contactor's 10kA. Contact your Sprecher + Schuh representative for a higher kAIC.
- ⑤ CAUT9-116...CAUT9-370 starters are available with "EI" option for PLC interface. Change catalog number to include "EI". Example: CAUT9-116-*◆-TB175G0 becomes CAUT9-116-EI-*◆-TB175G0. See page C104 for price adder.

Ordering Instructions

Specify Catalog Number	
Replace (*) with Coil Code	See page C104
Replace (◆) with O/L Relay	See pages C105-C106
Factory Modifications available	See pages C107-C111

Series CAUT7 & CAUT9 with Thermal-Magnetic Circuit Breaker - 600V Delta

Maximum Horse-power Three Phase				MCCB Amps	Type 1 General Purpose	D I M	Type 12 [Type 3R ☉]	D I M	Type 4 Watertight	D I M	Type 4X Watertight Corrosion Resistant Non-metallic	D I M
200V	230V	460V	575V		Catalog No.		☉ Catalog No.		☉ Catalog No.		☉ Catalog No.	
					CAUT		CAUT		CAUT		CAUT	
2	2	5	5	15	7-9-*◆-TBH15G0	D3	7-9-*◆-TBH15D0	Q	7-9-*◆-TBH15W0	Q	7-9-*◆-TBH15C0	V2
~	~	~	7.5	20	7-9-*◆-TBH20G0	D3	7-9-*◆-TBH20D0	Q	7-9-*◆-TBH20W0	Q	7-9-*◆-TBH20C0	V2
3	3	7.5	10	20	7-12-*◆-TBH20G0	D3	7-12-*◆-TBH20D0	Q	7-12-*◆-TBH20W0	Q	7-12-*◆-TBH20C0	V2
5	~	~	15	35	7-23-*◆-TBH35G0	D3	7-23-*◆-TBH35D0	Q	7-23-*◆-TBH35W0	Q	7-23-*◆-TBH35C0	V2
~	~	~	20	40	7-30-*◆-TBH40G0	D3	7-30-*◆-TBH40D0	Q	7-30-*◆-TBH40W0	Q	7-30-*◆-TBH40C0	V2
7.5	10	20	25	50	7-30-*◆-TBH50G0	D3	7-30-*◆-TBH50D0	Q	7-30-*◆-TBH50W0	Q	7-30-*◆-TBH50C0	V2
10	~	25	30	60	7-37-*◆-TBH60G0	D3	7-37-*◆-TBH60D0	Q	7-37-*◆-TBH60W0	Q	7-37-*◆-TBH60C0	V2
15	20	40	40	80	7-55-*◆-TBH80G0	D3	7-55-*◆-TBH80D0	Q	7-55-*◆-TBH80W0	Q	7-55-*◆-TBH80C0	V2
~	~	~	40	80	7-60-*◆-TBH80G0	D3	7-60-*◆-TBH80D0	Q	7-60-*◆-TBH80W0	Q	7-60-*◆-TBH80C0	W2
15	20	40	50	100	7-60-*◆-TBH100G0	D3	7-60-*◆-TBH100D0	Q	7-60-*◆-TBH100W0	Q	7-60-*◆-TBH100C0	W2
~	25	~	60	125	7-72-*◆-TBH125G0	D3	7-72-*◆-TBH125D0	Q	7-72-*◆-TBH125W0	Q	7-72-*◆-TBH125C0	W2
~	~	~	75 ☉	150	7-97-*◆-TBH150G0	D3	7-97-*◆-TBH150D0	Q	7-97-*◆-TBH150W0	Q	7-97-*◆-TBH150C0	W2
30	~	75	~	175	9-116-*◆-TBH175G0 ☉	E2	9-116-*◆-TBH175D0 ☉	R2	9-116-*◆-TBH175W0 ☉	R2	9-116-*◆-TBH175C0 ☉	X1
~	40	~	100 ☉	200	9-116-*◆-TBH200G0 ☉	E2	9-116-*◆-TBH200D0 ☉	R2	9-116-*◆-TBH200W0 ☉	R2	9-116-*◆-TBH200C0 ☉	X1
40	~	100	125 ☉	225	9-146-*◆-TBH225G0 ☉	G	9-146-*◆-TBH225D0 ☉	T	9-146-*◆-TBH225W0 ☉	T	9-146-*◆-TBH225C0 ☉	X1

Ordering Instructions

Specify Catalog Number	
Replace (*) with Coil Code	See page C104
Replace (◆) with O/L Relay	See pages C105-C106
Factory Modifications available	See pages C107-C111

NOTE: Catalog numbers and enclosure dimensions reflect contactors with AC coils. For DC coils, select Coil Code from the DC Coil Code table on page C104 and follow the instructions for modifying catalog numbers.

- ① Dimensional information starts on page C122.
- ② For Type 3R outdoor applications, replace "D" in catalog number with an "R". Dimensions may change. For example number CAUT7-30-*◆-TBH50D0 becomes CAUT7-30-*◆-TBH50R0. Price remains the same.
- ③ The short circuit and kAIC is relegated to the contactor's 10kA. Contact your Sprecher + Schuh representative for a higher kAIC.
- ④ CAUT9-116...CAUT9-370 starters are available with "EI" option for PLC interface. Change catalog number to include "-EI". Example: CAUT9-116-*◆-TBH175G0 becomes CAUT9-116-EI-*◆-TBH175G0. See page C104 for price adder.

Series CAT7 & CAT9 with Fusible Disconnect (J-Type) ☉☉

Maximum Horsepower Three Phase					Fuse Clip Amps	Type 1 General Purpose	D I M	Type 12 [Type 3R ☉] Industrial Dusttight	D I M	Type 4 Watertight	D I M	Type 4X Watertight Corrosion Resistant Non-metallic	D I M
200V	230V	460V	575V	Catalog No.		① Catalog No.		① Catalog No.		① Catalog No.			
					CAT		CAT		CAT		CAT		
2	2	5	7.5	30	7-9-*◆-JF61G0	C	7-9-*◆-JF61D0	C2	7-9-*◆-JF61W0	Q	7-9-*◆-JF61C0	V1	
3	3	7.5	10	30	7-12-*◆-JF61G0	C	7-12-*◆-JF61D0	C2	7-12-*◆-JF61W0	Q	7-12-*◆-JF61C0	V1	
5	5	10	15	30	7-16-*◆-JF61G0	C	7-16-*◆-JF61D0	C2	7-16-*◆-JF61W0	Q	7-16-*◆-JF61C0	V1	
5	~	~	15	30	7-23-*◆-JF61G0	C	7-23-*◆-JF61D0	C2	7-23-*◆-JF61W0	Q	7-23-*◆-JF61C0	V1	
~	7.5	15	~	60	7-23-*◆-JF62G0	C	7-23-*◆-JF62D0	C2	7-23-*◆-JF62W0	Q	7-23-*◆-JF62C0	V1	
7.5	10	20	25	60	7-30-*◆-JF62G0	C	7-30-*◆-JF62D0	C2	7-30-*◆-JF62W0	Q	7-30-*◆-JF62C0	V1	
10	10	25	30	60	7-37-*◆-JF62G0	C	7-37-*◆-JF62D0	C2	7-37-*◆-JF62W0	Q	7-37-*◆-JF62C0	V1	
10	~	30	30	60	7-43-*◆-JF62G0	C	7-43-*◆-JF62D0	C2	7-43-*◆-JF62W0	Q	7-43-*◆-JF62C0	V1	
~	15	~	~	100	7-43-*◆-JF63G0	D3	7-43-*◆-JF63D0	Q	7-43-*◆-JF63W0	Q	7-43-*◆-JF63C0	W1	
~	~	~	40	60	7-55-*◆-JF62G0	C	7-55-*◆-JF62D0	C2	7-55-*◆-JF62W0	Q	7-55-*◆-JF62C0	V1	
15	20	40	~	100	7-55-*◆-JF63G0	D3	7-55-*◆-JF63D0	Q	7-55-*◆-JF63W0	Q	7-55-*◆-JF63C0	W1	
~	~	~	40	60	7-60-*◆-JF62G0	D3	7-60-*◆-JF62D0	Q	7-60-*◆-JF62W0	Q	7-60-*◆-JF62C0	W2	
15	20	40	50	100	7-60-*◆-JF63G0	D3	7-60-*◆-JF63D0	Q	7-60-*◆-JF63W0	Q	7-60-*◆-JF63C0	W2	
20	25	50	60	100	7-72-*◆-JF63G0	D3	7-72-*◆-JF63D0	Q	7-72-*◆-JF63W0	Q	7-72-*◆-JF63C0	W2	
~	~	~	60	100	7-85-*◆-JF63G0	D3	7-85-*◆-JF63D0	Q	7-85-*◆-JF63W0	Q	7-85-*◆-JF63C0	W2	
25	30	60	~	200	7-85-*◆-JF64G0	G	7-85-*◆-JF64D0	T	7-85-*◆-JF64W0	T	7-85-*◆-JF64C0	X1	
30	30	75	75	200	7-97-*◆-JF64G0	G	7-97-*◆-JF64D0	T	7-97-*◆-JF64W0	T	7-97-*◆-JF64C0	X1	
30	40	75	100	200	9-116-*◆-JF64G0 ☉	G	9-116-*◆-JF64D0 ☉	T	9-116-*◆-JF64W0 ☉	T	9-116-*◆-JF64C0 ☉	A2	
40	50	100	125	200	9-146-*◆-JF64G0 ☉	G	9-146-*◆-JF64D0 ☉	T	9-146-*◆-JF64W0 ☉	T	9-146-*◆-JF64C0 ☉	A2	
50	60	125	150	400	9-190-*◆-JF65G0 ☉	H	9-190-*◆-JF65D0 ☉	H	9-190-*◆-JF65W0 ☉	H	9-190-*◆-JF65C0 ☉	Y1	
60	75	150	200	400	9-205-*◆-JF65G0 ☉	H	9-205-*◆-JF65D0 ☉	H	9-205-*◆-JF65W0 ☉	H	9-205-*◆-JF65C0 ☉	Y1	
75	100	200	250	400	9-265-*◆-JF65G0 ☉	J	9-265-*◆-JF65D0 ☉	J	9-265-*◆-JF65W0 ☉	J	9-265-*◆-JF65C0 ☉	Y1	
100	125	250	300	600	9-305-*◆-JF66G0 ☉	R/F	9-305-*◆-JF66D0 ☉	R/F	9-305-*◆-JF66W0 ☉	R/F	9-305-*◆-JF66C0 ☉	R/F	
125	150	300	350	600	9-370-*◆-JF66G0 ☉	R/F	9-370-*◆-JF66D0 ☉	R/F	9-370-*◆-JF66W0 ☉	R/F	9-370-*◆-JF66C0 ☉	R/F	
125	150	~	400	600	9-400-EI-*◆-JF66G0	R/F	9-400-EI-*◆-JF66D0	R/F	9-400-EI-*◆-JF66W0	R/F	9-400-EI-*◆-JF66C0	R/F	
~	~	350	~	800	9-400-EI-*◆-JF67G0	R/F	9-400-EI-*◆-JF67D0	R/F	9-400-EI-*◆-JF67W0	R/F	9-400-EI-*◆-JF67C0	R/F	
150	200	400	500	800	9-460-EI-*◆-JF67G0	R/F	9-460-EI-*◆-JF67D0	R/F	9-460-EI-*◆-JF67W0	R/F	9-460-EI-*◆-JF67C0	R/F	

Larger sizes available. Contact your Sprecher + Schuh representative.

NOTE: Catalog numbers and enclosure dimensions reflect contactors with AC coils. For DC coils, select Coil Code from the DC Coil Code table on page C104 and follow the instructions for modifying catalog numbers.

- ① Dimensional information starts on page C122.
- ② For Type 3R outdoor applications, replace "D" in catalog number with an "R". Dimensions may change. For example number CAT7-23-*◆-JF62D0 becomes CAT7-23-*◆-JF62R0. Price remains the same.
- ③ Fusible combo starter uses the L11 Disconnect. Fuse clips accept "J" type fuses. Power fuses not supplied.
- ④ A Red and Yellow Handle may be selected instead of the standard Black handle. Change "JF" to "LF" in catalog number.
- ⑤ CAT9-116...CAT9-370 starters are available with "EI" option for PLC interface. Change catalog number to include "-EI". Example: CAT9-116-*◆-JF64G0 becomes CAT9-116-EI-*◆-JF64G0. See page C104 for price adder.

Ordering Instructions

Specify Catalog Number	
Replace (*) with Coil Code	See page C104
Replace (◆) with O/L Relay	See pages C105-C106
Factory Modifications available	See pages C107-C111

Series CAUT7 & CAUT9 with Fusible Disconnect (J-Type) ④④

Maximum Horsepower Three Phase				Fuse Clips Amps	Type 1 General Purpose	D I M	Type 12 [Type 3R ④]	D I M	Type 4 Watertight	D I M	Type 4X Watertight Corrosion Resistant Non-metallic	D I M
200V	230V	460V	575V		Catalog No.		① Catalog No.		① Catalog No.		① Catalog No.	
					CAUT		CAUT		CAUT		CAUT	
2	2	5	7.5	30	7-9-*◆-JF61G0	D3	7-9-*◆-JF61D0	Q	7-9-*◆-JF61W0	Q	7-9-*◆-JF61C0	V1
3	3	7.5	10	30	7-12-*◆-JF61G0	D3	7-12-*◆-JF61D0	Q	7-12-*◆-JF61W0	Q	7-12-*◆-JF61C0	V1
5	5	10	15	30	7-16-*◆-JF61G0	D3	7-16-*◆-JF61D0	Q	7-16-*◆-JF61W0	Q	7-16-*◆-JF61C0	V1
5	~	~	15	30	7-23-*◆-JF61G0	D3	7-23-*◆-JF61D0	Q	7-23-*◆-JF61W0	Q	7-23-*◆-JF61C0	V1
	7.5	15	~	60	7-23-*◆-JF62G0	D3	7-23-*◆-JF62D0	Q	7-23-*◆-JF62W0	Q	7-23-*◆-JF62C0	V1
7.5	10	20	25	60	7-30-*◆-JF62G0	D3	7-30-*◆-JF62D0	Q	7-30-*◆-JF62W0	Q	7-30-*◆-JF62C0	V1
10	10	25	30	60	7-37-*◆-JF62G0	D3	7-37-*◆-JF62D0	Q	7-37-*◆-JF62W0	Q	7-37-*◆-JF62C0	V1
10	~	30	30	60	7-43-*◆-JF62G0	D3	7-43-*◆-JF62D0	Q	7-43-*◆-JF62W0	Q	7-43-*◆-JF62C0	V1
~	15	~	~	100	7-43-*◆-JF63G0	E	7-43-*◆-JF63D0	R	7-43-*◆-JF63W0	R	7-43-*◆-JF63C0	W1
~	~	~	40	60	7-55-*◆-JF62G0	D3	7-55-*◆-JF62D0	Q	7-55-*◆-JF62W0	Q	7-55-*◆-JF62C0	V1
15	20	40	~	100	7-55-*◆-JF63G0	E	7-55-*◆-JF63D0	R	7-55-*◆-JF63W0	R	7-55-*◆-JF63C0	W1
~	~	~	40	60	7-60-*◆-JF62G0	E	7-60-*◆-JF62D0	R	7-60-*◆-JF62W0	R	7-60-*◆-JF62C0	W2
15	20	40	50	100	7-60-*◆-JF63G0	E	7-60-*◆-JF63D0	R	7-60-*◆-JF63W0	R	7-60-*◆-JF63C0	W2
20	25	50	60	100	7-72-*◆-JF63G0	E	7-72-*◆-JF63D0	R	7-72-*◆-JF63W0	R	7-72-*◆-JF63C0	W2
~	~	~	60	100	7-85-*◆-JF63G0	E	7-85-*◆-JF63D0	R	7-85-*◆-JF63W0	R	7-85-*◆-JF63C0	W2
25	30	60	~	200	7-85-*◆-JF64G0	F	7-85-*◆-JF64D0	T	7-85-*◆-JF64W0	T	7-85-*◆-JF64C0	A2
30	30	75	75	200	7-97-*◆-JF64G0	F	7-97-*◆-JF64D0	T	7-97-*◆-JF64W0	T	7-97-*◆-JF64C0	A2
30	40	75	100	200	9-116-*◆-JF64G0 ④	H	9-116-*◆-JF64D0 ④	H	9-116-*◆-JF64W0 ④	H	9-116-*◆-JF64C0 ④	Y1
40	50	100	125	200	9-146-*◆-JF64G0 ④	H	9-146-*◆-JF64D0 ④	H	9-146-*◆-JF64W0 ④	H	9-146-*◆-JF64C0 ④	Y1
50	60	125	150	400	9-190-*◆-JF65G0 ④	J	9-190-*◆-JF65D0 ④	J	9-190-*◆-JF65W0 ④	J	9-190-*◆-JF65C0 ④	Z1
60	75	150	200	400	9-205-*◆-JF65G0 ④	J	9-205-*◆-JF65D0 ④	J	9-205-*◆-JF65W0 ④	J	9-205-*◆-JF65C0 ④	Z1
75	100	200	250	400	9-265-*◆-JF65G0 ④	J	9-265-*◆-JF65D0 ④	J	9-265-*◆-JF65W0 ④	J	9-265-*◆-JF65C0 ④	Z1
100	125	250	300	600	9-305-*◆-JF66G0 ④	R/F	9-305-*◆-JF66D0 ④	R/F	9-305-*◆-JF66W0 ④	R/F	9-305-*◆-JF66C0 ④	R/F
125	150	300	350	600	9-370-*◆-JF66G0 ④	R/F	9-370-*◆-JF66D0 ④	R/F	9-370-*◆-JF66W0 ④	R/F	9-370-*◆-JF66C0 ④	R/F
125	150	~	400	600	9-400-EI-*◆-JF66G0	R/F	9-400-EI-*◆-JF66D0	R/F	9-400-EI-*◆-JF66W0	R/F	9-400-EI-*◆-JF66C0	R/F
~	~	350	~	800	9-400-EI-*◆-JF67G0	R/F	9-400-EI-*◆-JF67D0	R/F	9-400-EI-*◆-JF67W0	R/F	9-400-EI-*◆-JF67C0	R/F
150	200	400	500	800	9-460-EI-*◆-JF67G0	R/F	9-460-EI-*◆-JF67D0	R/F	9-460-EI-*◆-JF67W0	R/F	9-460-EI-*◆-JF67C0	R/F

Larger sizes available. Contact your Sprecher + Schuh representative.

NOTE: Catalog numbers and enclosure dimensions reflect contactors with AC coils. For DC coils, select Coil Code from the DC Coil Code table on page C104 and follow the instructions for modifying catalog numbers.

- ① Dimensional information starts on page C122
- ② For Type 3R outdoor applications, replace "D" in catalog number with an "R". Dimensions may change. For example number CAUT7-23-*◆-JF62D0 becomes CAUT7-23-*◆-JF62R0. Price remains the same.
- ③ Fusible combo starter used the L11 Disconnect. Fuse clips accept "J" type fuses. Power fuses not supplied.
- ④ A Red and Yellow Handle may be selected instead of the standard y and Black handle. Change "JF" to "LF" in catalog number.
- ⑤ CAUT9-116...CAUT9-370 starters are available with "EI" option for PLC interface. Change catalog number to include "-EI". Example: CAUT9-116-*◆-JF64G0 becomes CAUT9-116-EI-*◆-JF64G0. See page C104 for price adder.

Ordering Instructions

Specify Catalog Number	
Replace (*) with Coil Code	See page C104
Replace (◆) with O/L Relay	See pages C105-C106
Factory Modifications available	See pages C107-C111

C
Combination Starters

Series CAT7 & CAT9 with Non-Fusible Disconnect

Maximum Horsepower Three Phase				Disc Size/ Amps	Type 1 General Purpose	DIM	Type 12 [Type 3R ②] Industrial Dusttight	DIM	Type 4 Watertight	DIM	Type 4X Watertight Corrosion Resistant Non-metallic	DIM
200V	230V	460V	575V		Catalog No.		① Catalog No.		① Catalog No.		① Catalog No.	
					CAT		CAT		CAT		CAT	
2	2	5	7.5	30	7-9-*◆-JU61G0	C	7-9-*◆-JU61D0	C2	7-9-*◆-JU61W0	Q	7-9-*◆-JU61C0	V1
3	3	7.5	10	30	7-12-*◆-JU61G0	C	7-12-*◆-JU61D0	C2	7-12-*◆-JU61W0	Q	7-12-*◆-JU61C0	V1
5	5	10	15	30	7-16-*◆-JU61G0	C	7-16-*◆-JU61D0	C2	7-16-*◆-JU61W0	Q	7-16-*◆-JU61C0	V1
5	7.5	15	15	30	7-23-*◆-JU61G0	C	7-23-*◆-JU61D0	C2	7-23-*◆-JU61W0	Q	7-23-*◆-JU61C0	V1
7.5	~	~	20	30	7-30-*◆-JU61G0	C	7-30-*◆-JU61D0	C2	7-30-*◆-JU61W0	Q	7-30-*◆-JU61C0	V1
~	10	20	25	60	7-30-*◆-JU62G0	C	7-30-*◆-JU62D0	C2	7-30-*◆-JU62W0	Q	7-30-*◆-JU62C0	V1
10	10	25	30	60	7-37-*◆-JU62G0	C	7-37-*◆-JU62D0	C2	7-37-*◆-JU62W0	Q	7-37-*◆-JU62C0	V1
10	15	30	30	60	7-43-*◆-JU62G0	C	7-43-*◆-JU62D0	C2	7-43-*◆-JU62W0	Q	7-43-*◆-JU62C0	V1
15	~	~	40	60	7-55-*◆-JU62G0	C	7-55-*◆-JU62D0	C2	7-55-*◆-JU62W0	Q	7-55-*◆-JU62C0	V1
~	20	40	~	100	7-55-*◆-JU63G0	D3	7-55-*◆-JU63D0	Q	7-55-*◆-JU63W0	Q	7-55-*◆-JU63C0	W2
15	~	~	~	60	7-60-*◆-JU62G0	D3	7-60-*◆-JU62D0	Q	7-60-*◆-JU62W0	Q	7-60-*◆-JU62C0	W2
~	20	40	50	100	7-60-*◆-JU63G0	D3	7-60-*◆-JU63D0	Q	7-60-*◆-JU63W0	Q	7-60-*◆-JU63C0	W2
20	25	50	60	100	7-72-*◆-JU63G0	D3	7-72-*◆-JU63D0	Q	7-72-*◆-JU63W0	Q	7-72-*◆-JU63C0	W2
25	30	60	60	100	7-85-*◆-JU63G0	D3	7-85-*◆-JU63D0	Q	7-85-*◆-JU63W0	Q	7-85-*◆-JU63C0	W2
~	30	~	75	100	7-97-*◆-JU63G0	D3	7-97-*◆-JU63D0	Q	7-97-*◆-JU63W0	Q	7-97-*◆-JU63C0	W2
30	~	75	~	200	7-97-*◆-JU64G0	G	7-97-*◆-JU64D0	T	7-97-*◆-JU64W0	T	7-97-*◆-JU64C0	X1
30	40	75	100	200	9-116-*◆-JU64G0 ⑤	G	9-116-*◆-JU64D0 ⑤	T	9-116-*◆-JU64W0 ⑤	T	9-116-*◆-JU64C0 ⑤	A2
40	50	100	125	200	9-146-*◆-JU64G0 ⑤	G	9-146-*◆-JU64D0 ⑤	T	9-146-*◆-JU64W0 ⑤	T	9-146-*◆-JU64C0 ⑤	A2
50	60	125	150	200	9-190-*◆-JU64G0 ⑤	G	9-190-*◆-JU64D0 ⑤	T	9-190-*◆-JU64W0 ⑤	T	9-190-*◆-JU64C0 ⑤	A2
60	75	150	200	400	9-205-*◆-JU65G0 ⑤	H	9-205-*◆-JU65D0 ⑤	H	9-205-*◆-JU65W0 ⑤	H	9-205-*◆-JU65C0 ⑤	Y1
75	100	200	250	400	9-265-*◆-JU65G0 ⑤	J	9-265-*◆-JU65D0 ⑤	J	9-265-*◆-JU65W0 ⑤	J	9-265-*◆-JU65C0 ⑤	Y1
100	125	250	300	400	9-305-*◆-JU65G0 ⑤	J	9-305-*◆-JU65D0 ⑤	J	9-305-*◆-JU65W0 ⑤	J	9-305-*◆-JU65C0 ⑤	Y1

Larger sizes available. Contact your Sprecher + Schuh representative.

NOTE: Catalog numbers and enclosure dimensions reflect contactors with AC coils. For DC coils, select Coil Code from the DC Coil Code table on page C104 and follow the instructions for modifying catalog numbers.

- ① Dimensional information starts on page C122.
- ② For Type 3R outdoor applications, replace "D" in catalog number with an "R". Dimensions may change. For example number CAT7-23-*◆-JU61D0 becomes CAT7-23-*◆-JU61R0. Price remains the same.
- ③ Non-fusible combo-starter uses the L11 Non-Fusible Disconnect.
- ④ A Red and Yellow Handle may be selected instead of the standard Black handle. Change "JU" to "LU" in catalog number.
- ⑤ CAT9-116...CAT9-370 starters are available with "E1" option for PLC interface. Change catalog number to include "E1". Example: CAT9-116-*◆-JU64G0 becomes CAT9-116-E1-*◆-JU64G0. See page C104 for price adder.

Ordering Instructions

Specify Catalog Number	
Replace (*) with Coil Code	See page C104
Replace (◆) with O/L Relay	See pages C105-C106
Factory Modifications available	See pages C107-C111

Series CAUT7 & CAUT9 with Non-Fusible Disconnect ④

Maximum Horsepower Three Phase				Disc Size/ Amps	Type 1 General Purpose	DIM	Type 12 [Type 3R ②] Industrial Dusttight	DIM	Type 4 Watertight	DIM	Type 4X Watertight Corrosion Resistant Non-metallic	DIM
200V	230V	460V	575V		Catalog No.		① Catalog No.		① Catalog No.		① Catalog No.	
					CAUT		CAUT		CAUT		CAUT	
2	2	5	7.5	30	7-9-*◆-JU61G0	D3	7-9-*◆-JU61D0	Q	7-9-*◆-JU61W0	Q	7-9-*◆-JU61C0	W1
3	3	7.5	10	30	7-12-*◆-JU61G0	D3	7-12-*◆-JU61D0	Q	7-12-*◆-JU61W0	Q	7-12-*◆-JU61C0	W1
5	5	10	15	30	7-16-*◆-JU61G0	D3	7-16-*◆-JU61D0	Q	7-16-*◆-JU61W0	Q	7-16-*◆-JU61C0	W1
5	7.5	15	15	30	7-23-*◆-JU61G0	D3	7-23-*◆-JU61D0	Q	7-23-*◆-JU61W0	Q	7-23-*◆-JU61C0	W1
7.5	~	~	20	30	7-30-*◆-JU61G0	D3	7-30-*◆-JU61D0	Q	7-30-*◆-JU61W0	Q	7-30-*◆-JU61C0	W1
~	10	20	25	60	7-30-*◆-JU62G0	D3	7-30-*◆-JU62D0	Q	7-30-*◆-JU62W0	Q	7-30-*◆-JU62C0	W1
10	10	25	30	60	7-37-*◆-JU62G0	D3	7-37-*◆-JU62D0	Q	7-37-*◆-JU62W0	Q	7-37-*◆-JU62C0	W1
10	15	30	30	60	7-43-*◆-JU62G0	D3	7-43-*◆-JU62D0	Q	7-43-*◆-JU62W0	Q	7-43-*◆-JU62C0	W1
15	~	~	40	60	7-55-*◆-JU62G0	D3	7-55-*◆-JU62D0	Q	7-55-*◆-JU62W0	Q	7-55-*◆-JU62C0	W1
~	20	40	~	100	7-55-*◆-JU63G0	E	7-55-*◆-JU63D0	R	7-55-*◆-JU63W0	R	7-55-*◆-JU63C0	W2
15	~	~	~	60	7-60-*◆-JU62G0	E	7-60-*◆-JU62D0	Q	7-60-*◆-JU62W0	Q	7-60-*◆-JU62C0	W2
~	20	40	50	100	7-60-*◆-JU63G0	E	7-60-*◆-JU63D0	R	7-60-*◆-JU63W0	R	7-60-*◆-JU63C0	W2
20	25	50	60	100	7-72-*◆-JU63G0	E	7-72-*◆-JU63D0	R	7-72-*◆-JU63W0	R	7-72-*◆-JU63C0	W2
25	30	60	60	100	7-85-*◆-JU63G0	E	7-85-*◆-JU63D0	R	7-85-*◆-JU63W0	R	7-85-*◆-JU63C0	W2
~	30	~	75	100	7-97-*◆-JU63G0	E	7-97-*◆-JU63D0	R	7-97-*◆-JU63W0	R	7-97-*◆-JU63C0	W2
30	~	75	~	200	7-97-*◆-JU64G0	F	7-97-*◆-JU64D0	T	7-97-*◆-JU64W0	T	7-97-*◆-JU64C0	A2
30	40	75	100	200	9-116-*◆-JU64G0 ⑤	H	9-116-*◆-JU64D0 ⑤	H	9-116-*◆-JU64W0 ⑤	H	9-116-*◆-JU64C0 ⑤	Y1
40	50	100	125	200	9-146-*◆-JU64G0 ⑤	H	9-146-*◆-JU64D0 ⑤	H	9-146-*◆-JU64W0 ⑤	H	9-146-*◆-JU64C0 ⑤	Y1
50	60	125	150	200	9-190-*◆-JU64G0 ⑤	J	9-190-*◆-JU64D0 ⑤	J	9-190-*◆-JU64W0 ⑤	J	9-190-*◆-JU64C0 ⑤	Z1
60	75	150	200	400	9-205-*◆-JU65G0 ⑤	J	9-205-*◆-JU65D0 ⑤	J	9-205-*◆-JU65W0 ⑤	J	9-205-*◆-JU65C0 ⑤	Z1
75	100	200	250	400	9-265-*◆-JU65G0 ⑤	J	9-265-*◆-JU65D0 ⑤	J	9-265-*◆-JU65W0 ⑤	J	9-265-*◆-JU65C0 ⑤	Z1
100	125	250	300	400	9-305-*◆-JU65G0 ⑤	J	9-305-*◆-JU65D0 ⑤	J	9-305-*◆-JU65W0 ⑤	J	9-305-*◆-JU65C0 ⑤	Z1

Larger sizes available. Contact your Sprecher + Schuh representative.

Combination Starters

Ordering Instructions

Specify Catalog Number	
Replace (*) with Coil Code	See page C104
Replace ◆ with O/L Relay	See pages C105-C106
Factory Modifications available	See pages C107-C111

NOTE: Catalog numbers and enclosure dimensions reflect contactors with AC coils. For DC coils, select Coil Code from the DC Coil Code table on page C104 and follow the instructions for modifying catalog numbers.

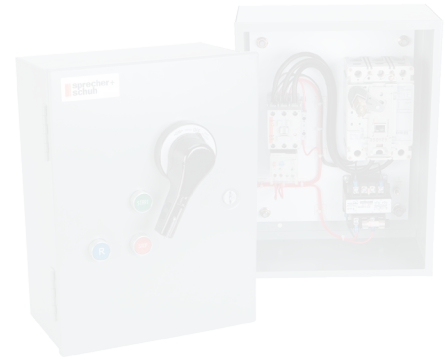
- ① Dimensional information starts on page C122.
- ② For Type 3R outdoor applications, replace "D" in catalog number with an "R". Dimensions may change. For example number CAUT7-23-*◆-JU61D0 becomes CAUT7-23-*◆-JU61R0. Price remains the same.
- ③ Non-fusible combo-starter uses the L11 Non-Fusible Disconnect.
- ④ A Red and Yellow Handle may be selected instead of the standard Black handle. Change "JU" to "LU" in catalog number.
- ⑤ CAUT9-116...CAUT9-370 starters are available with "EI" option for PLC interface. Change catalog number to include "-EI". Example: CAUT9-116-*◆-JU64G0 becomes CAUT9-116-EI-*◆-JU64G0. See page C104 for price adder.

NEMA Sized Combination Starters - Through the Door Operated

NEMA Combination Starters

Smart and cost effective... for any application

Sprecher + Schuh's through-the-door operated combination starters represent an economical alternative to the classic flange-operated combo solution. It is designed to meet rigid UL/NEC withstand specifications. Sprecher + Schuh has been building custom control panels with this design for years. Experience the durability of this product!



Starting with the best

At the heart of all Sprecher + Schuh NEMA sized combination starters is the CATN7 line of motor starters. Each starter proudly displays the NEMA size (00, 0, 1, 2, or 3) and HP at applied voltage. This line of starters is designed to meet rigid consultant specifications for NEMA starters.

Top line protection...

NEMA labeled combination starters are equipped with Sprecher + Schuh premium CEP7 solid state thermal relay standard. Unlike traditional overload relays which indirectly sense motor current through heat elements, the CEP7 solid state thermal relay's measures motor current directly through integrated current transformers and on board electronics. The electronics provide numerous advantages over electromechanical relays. Alternatively, the CT7N Thermal Overload Relay may also be selected.

Choice of Disconnect

- Choices for disconnect include:
- Thermal Magnetic Molded Case Circuit Breaker (MCCB)
- L11 Fusible or Non-Fusible Disconnect switch

Thermal Magnetic Molded Case Circuit Breaker (MCCB)

The through-the-door operated combo MCCB is available to meet UL short circuit withstand specifications. An MCCB prevents single phasing by simultaneously opening all three phases when a fault occurs in any one phase. An MCCB can be reset after the fault has been cleared.

Disconnect Switches

The through-the-door operated combo is available with the L11 switch. A mechanical door interlock system prevents the door from being opened when the disconnect is closed, and conversely, prevents the disconnect from being closed when the door is open. Both functions can be defeated for test and maintenance purposes. Other safety features include padlock provisions and a high visibility operating handle.

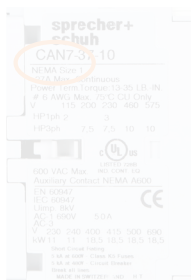
The L11 Switch disconnects have a quick make/quick break, non-teasing action. The L11 fusible switch is suitable for interrupting up to 100,000 amperes when class "J" fuses are used. All L11 disconnect switches conform to UL 98 standards.

Choice of Enclosures

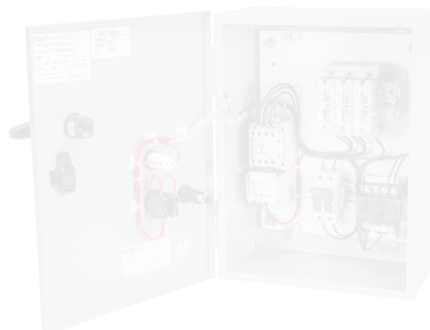
- Available enclosures include;
- Type 1 General Purpose
- Type 3R Raintight
- Type 12 Dusttight
- Type 4 Watertight
- Type 4X Corrosion Resistant



CAN7 NEMA labeled contactor (AC)



This page has moved. See new NEMA Starters Section starting at page 101.1



Series CATN7 with Thermal-Magnetic Circuit Breaker

NEMA Size	Maximum Horse-power Three Phase				MCCB Amps	Type 1 General Purpose	DIM	Type 12 [Type 3R Ⓣ]	DIM	Type 4 Watertight	DIM	Type 4X Watertight Corrosion Resistant Non-metallic	DIM
	200V	230V	460V	575V		Catalog No.		Catalog No.		Catalog No.		Catalog No.	
						CATN		CATN		CATN		CATN	
00	1-1/2	1-1/2	2	2 Ⓣ	15	7-12-*◆-TB15G0	C2	7-12-*◆-TB15D0	C3	7-12-*◆-TB15W0	C2	7-12-*◆-TB15C0	V2
0	2	2	5	5 Ⓣ	15	7-16-*◆-TB15G0	C2	7-16-*◆-TB15D0	C3	7-16-*◆-TB15W0	C2	7-16-*◆-TB15C0	V2
	3	3	~	~	20	7-16-*◆-TB20G0	C2	7-16-*◆-TB20D0	C3	7-16-*◆-TB20W0	C2	7-16-*◆-TB20C0	V2
1	~	~	7-1/2	10 Ⓣ	20	7-37-*◆-TB20G0	C2	7-37-*◆-TB20D0	C3	7-37-*◆-TB20W0	C2	7-37-*◆-TB20C0	V2
	~	5	10	~	30	7-37-*◆-TB30G0	C2	7-37-*◆-TB30D0	C3	7-37-*◆-TB30W0	C2	7-37-*◆-TB30C0	V2
	5	~	~	~	35	7-37-*◆-TB35G0	C2	7-37-*◆-TB35D0	C3	7-37-*◆-TB35W0	C2	7-37-*◆-TB35C0	V2
	~	7-1/2	~	~	40	7-37-*◆-TB40G0	C2	7-37-*◆-TB40D0	C3	7-37-*◆-TB40W0	C2	7-37-*◆-TB40C0	V2
	7-1/2	~	~	~	50	7-37-*◆-TB50G0	C2	7-37-*◆-TB50D0	C3	7-37-*◆-TB50W0	C2	7-37-*◆-TB50C0	V2
2	~	~	~	15 Ⓣ	35	7-43-*◆-TB35G0	C2	7-43-*◆-TB35D0	C3	7-43-*◆-TB35W0	C2	7-43-*◆-TB35C0	V2
	~	~	15	20 Ⓣ	40	7-43-*◆-TB40G0	C2	7-43-*◆-TB40D0	C3	7-43-*◆-TB40W0	C2	7-43-*◆-TB40C0	V2
	~	10	20	25 Ⓣ	50	7-43-*◆-TB50G0	C2	7-43-*◆-TB50D0	C3	7-43-*◆-TB50W0	C2	7-43-*◆-TB50C0	V2
	10	~	25	~	60	7-43-*◆-TB60G0	C2	7-43-*◆-TB60D0	C3	7-43-*◆-TB60W0	C2	7-43-*◆-TB60C0	V2
	~	15	~	~	80	7-43-*◆-TB80G0	C2	7-43-*◆-TB80D0	C3	7-43-*◆-TB80W0	C2	7-43-*◆-TB80C0	V2
3	~	~	~	30 Ⓣ	60	7-85-*◆-TB60G0	D3	7-85-*◆-TB60D0	Q	7-85-*◆-TB60W0	Q	7-85-*◆-TB60C0	W2
	~	~	30	40 Ⓣ	80	7-85-*◆-TB80G0	D3	7-85-*◆-TB80D0	Q	7-85-*◆-TB80W0	Q	7-85-*◆-TB80C0	W2
	15	20	40	50 Ⓣ	100	7-85-*◆-TB100G0	D3	7-85-*◆-TB100D0	Q	7-85-*◆-TB100W0	Q	7-85-*◆-TB100C0	W2
	25	30	50	~	125	7-85-*◆-TB125G0	D3	7-85-*◆-TB125D0	Q	7-85-*◆-TB125W0	Q	7-85-*◆-TB125C0	W2

This page has moved. See new NEMA Starters Section starting at page 101.1

NEMA Combination Starters

NOTE: Catalog numbers and enclosure dimensions reflect contactors with AC coils. For DC coils, select Coil Code from the DC Coil Code table on page C104 and follow the instructions for modifying catalog numbers.

Ordering Instructions

Specify Catalog Number	
Replace (*) with Coil Code	See page C104
Replace (◆) with O/L Relay	See pages C105-C106
Factory Modifications available	See pages C107-C111

- Ⓣ Dimensional information starts on page C122.
- Ⓣ For Type 3R outdoor applications, replace "D" in catalog number with an "R". Dimensions may change. For example number CATN7-37-*◆-TB40D0 becomes CATN7-37-*◆-TB40R0. Price remains the same.
- Ⓣ Applicable to 600V/347V only. Refer to page C70 for 600V Delta solution.

Series CATN7 with Thermal-Magnetic Circuit Breaker - 600V Delta

NEMA Size	Maximum Horsepower Three Phase				MCCB Amps	Type 1 General Purpose	DI M	Type 12 [Type 3R Ⓣ] Industrial Dusttight	DI M	Type 4 Watertight	DI M	Type 4X Watertight Corrosion Resistant Non-metallic	DI M
	200V	230V	460V	575V		Catalog No.	Ⓣ	Catalog No.	Ⓣ	Catalog No.	Ⓣ	Catalog No.	Ⓣ
						CATN		CATN		CATN		CATN	
00	1-1/2	1-1/2	2	2	15	7-12-*-◆-TBH15G0	C2	7-12-*-◆-TBH15D0	C3	7-12-*-◆-TBH15W0	C2	7-12-*-◆-TBH15C0	V2
0	2	3	5	5	15	7-16-*-◆-TBH15G0	C2	7-16-*-◆-TBH15D0	C3	7-16-*-◆-TBH15W0	C2	7-16-*-◆-TBH15C0	V2
1	~	~	7-1/2	10	20	7-37-*-◆-TBH20G0	C2	7-37-*-◆-TBH20D0	C3	7-37-*-◆-TBH20W0	C2	7-37-*-◆-TBH20C0	V2
2	~	~	~	15	35	7-43-*-◆-TBH35G0	C2	7-43-*-◆-TBH35D0	C3	7-43-*-◆-TBH35W0	C2	7-43-*-◆-TBH35C0	V2
	~	~	15	20	40	7-43-*-◆-TBH40G0	C2	7-43-*-◆-TBH40D0	C3	7-43-*-◆-TBH40W0	C2	7-43-*-◆-TBH40C0	V2
	~	~	20	25	50	7-43-*-◆-TBH50G0	C2	7-43-*-◆-TBH50D0	C3	7-43-*-◆-TBH50W0	C2	7-43-*-◆-TBH50C0	V2
3	~	~	~	30	60	7-85-*-◆-TBH60G0	D3	7-85-*-◆-TBH60D0	Q	7-85-*-◆-TBH60W0	Q	7-85-*-◆-TBH60C0	W2
	~	~	30	40	80	7-85-*-◆-TBH80G0	D3	7-85-*-◆-TBH80D0	Q	7-85-*-◆-TBH80W0	Q	7-85-*-◆-TBH80C0	W2
	15	20	40	50	100	7-85-*-◆-TBH100G0	D3	7-85-*-◆-TBH100D0	Q	7-85-*-◆-TBH100W0	Q	7-85-*-◆-TBH100C0	W2

This page has moved.
See new NEMA Starters Section starting at page 101.1

NOTE: Catalog numbers and enclosure dimensions reflect contactors with AC coils. For DC coils, select Coil Code from the DC Coil Code table on page C104 and follow the instructions for modifying catalog numbers.

Ordering Instructions

Specify Catalog Number	
Replace (*) with Coil Code	See page C104
Replace (◆) with O/L Relay	See pages C105-C106
Factory Modifications available	See pages C107-C111

- Ⓣ Dimensional information starts on page C122.
- Ⓣ For Type 3R outdoor applications, replace "D" in catalog number with an "R". Dimensions may change. For example number CATN7-37-*-◆-TBH40D0 becomes CATN7-37-*-◆-TBH40R0. Price remains the same.

Series CATN7 208V AC with Thermal-Magnetic Circuit Breaker

NEMA Size	Max HP 3-Phase Ⓢ	Auxiliary Contacts per Contactor Ⓢ		MCCB Amps	Type 1 Metallic General Purpose	D I M	Type 3R Metallic Outdoor Raintight	D I M
		NO	NC		Catalog No.		Ⓢ Catalog No.	
00	0.25	2	1	15	CATN7-12-XA-D1BB-TB15G17-L11	C2	CATN7-12-XA-D1BB-TB15R17-L11	0
	0.5	2	1	15	CATN7-12-XA-D1CB-TB15G17-L11	C2	CATN7-12-XA-D1CB-TB15R17-L11	0
	0.75	2	1	15	CATN7-12-XA-D1CB-TB15G17-L11	C2	CATN7-12-XA-D1CB-TB15R17-L11	0
	1	2	1	15	CATN7-12-XA-D1CB-TB15G17-L11	C2	CATN7-12-XA-D1CB-TB15R17-L11	0
	1.5	2	1	15	CATN7-12-XA-D1DB-TB15G17-L11	C2	CATN7-12-XA-D1DB-TB15R17-L11	0
0	2	2	1	15	CATN7-16-XA-D1DB-TB15G17-L11	C2	CATN7-16-XA-D1DB-TB15R17-L11	0
	3	2	1	20	CATN7-16-XA-D1DB-TB20G17-L11	C2	CATN7-16-XA-D1DB-TB20R17-L11	0
1	5	2	1	35	CATN7-37-XA-D1ED-TB35G17-L11	C2	CATN7-37-XA-D1ED-TB35R17-L11	0
	7.5	2	1	50	CATN7-37-XA-D1ED-TB50G17-L11	C2	CATN7-37-XA-D1ED-TB50R17-L11	0
2	10	2	1	60	CATN7-43-XA-D1FD-TB60G17-L11	C2	CATN7-43-XA-D1FD-TB60R17-L11	0
3	15	2	1	100	CATN7-85-XA-EGE-TB100G17-L11	D3	CATN7-85-XA-EGE-TB100R17-L11	0
	20	2	1	125	CATN7-85-XA-EGE-TB125G17-L11	D3	CATN7-85-XA-EGE-TB125R17-L11	0
	25	2	1	125	CATN7-85-XA-EGE-TB125G17-L11	D3	CATN7-85-XA-EGE-TB125R17-L11	0

Full Voltage Non-Reversing (FVNR) Features include:

- NEMA-sized CAN7 contactor
- Three-Phase CEP7 Electronic Overload Relay
- Control Circuit Transformer
- Hand-Off-Auto (H-O-A) selector switch
- Red Run pilot light
- 2-NO and 1-NC auxiliaries for customer use
- Class CC Fuse holder as fused primary of CCT
- Reset pushbutton
- UL489 600V class thermal-magnetic molded case circuit breaker

NEMA Combination Starters

Series CATN7 230V AC with Thermal-Magnetic Circuit Breaker

NEMA Size	Max HP 3-Phase Ⓢ	Auxiliary Contacts per Contactor Ⓢ		MCCB Amps	Type 1 Metallic General Purpose	D I M	Type 3R Metallic Outdoor Raintight	D I M
		NO	NC		Catalog No.		Ⓢ Catalog No.	
00	0.25	2	1	15	CATN7-12-XB-D1BB-TB15G17-L11	C2	CATN7-12-XB-D1BB-TB15R17-L11	0
	0.5	2	1	15	CATN7-12-XB-D1CB-TB15G17-L11	C2	CATN7-12-XB-D1CB-TB15R17-L11	0
	0.75	2	1	15	CATN7-12-XB-D1CB-TB15G17-L11	C2	CATN7-12-XB-D1CB-TB15R17-L11	0
	1	2	1	15	CATN7-12-XB-D1CB-TB15G17-L11	C2	CATN7-12-XB-D1CB-TB15R17-L11	0
	1.5	2	1	15	CATN7-12-XB-D1DB-TB15G17-L11	C2	CATN7-12-XB-D1DB-TB15R17-L11	0
0	2	2	1	15	CATN7-16-XB-D1DB-TB15G17-L11	C2	CATN7-16-XB-D1DB-TB15R17-L11	0
	3	2	1	15	CATN7-16-XB-D1DB-TB15G17-L11	C2	CATN7-16-XB-D1DB-TB15R17-L11	0
1	5	2	1	30	CATN7-37-XB-D1ED-TB30G17-L11	C2	CATN7-37-XB-D1ED-TB30R17-L11	0
	7.5	2	1	40	CATN7-37-XB-D1ED-TB40G17-L11	C2	CATN7-37-XB-D1ED-TB40R17-L11	0
2	10	2	1	60	CATN7-43-XB-D1FD-TB60G17-L11	C2	CATN7-43-XB-D1FD-TB60R17-L11	0
	15	2	1	80	CATN7-43-XB-D1FD-TB80G17-L11	C2	CATN7-43-XB-D1FD-TB80R17-L11	0
3	20	2	1	100	CATN7-85-XB-EGE-TB100G17-L11	D3	CATN7-85-XB-EGE-TB100R17-L11	0
	25	2	1	125	CATN7-85-XB-EGE-TB125G17-L11	D3	CATN7-85-XB-EGE-TB125R17-L11	0
	30	2	1	150	CATN7-85-XB-EGE-TB150G17-L11	D3	CATN7-85-XB-EGE-TB150R17-L11	0

This page has moved.
See new NEMA Starters Section starting at page 101.1

- Ⓢ HP and NEMA size selection shown for 208V ratings only. Contact your Sprecher + Schuh representative for other voltage applications.
- Ⓢ Contactors are equipped with number and type of auxiliaries indicated. See page C108 to order additional or different auxiliary contacts.

- Ⓢ Dimensional information starts on page C122.
- Ⓢ HP and NEMA size selection shown for 230V ratings only. Contact your Sprecher + Schuh representative for other voltage applications.

Series CATN7 460V AC with Thermal-Magnetic Circuit Breaker

NEMA Size	Max HP 3-Phase ①	Auxiliary Contacts per Contactor ②		MCCB Amps	Type 1 Metallic General Purpose	D I M	Type 3R Metallic Outdoor Raintight	D I M
		NO	NC		Catalog No.		③ Catalog No.	
00	0.25	2	1	15	CATN7-12-XC-D1BB-TB15G17-L11	C2	CATN7-12-XC-D1BB-TB15R17-L11	0
	0.5	2	1	15	CATN7-12-XC-D1CB-TB15G17-L11	C2	CATN7-12-XC-D1CB-TB15R17-L11	0
	0.75	2	1	15	CATN7-12-XC-D1CB-TB15G17-L11	C2	CATN7-12-XC-D1CB-TB15R17-L11	0
	1	2	1	15	CATN7-12-XC-D1CB-TB15G17-L11	C2	CATN7-12-XC-D1CB-TB15R17-L11	0
	1.5	2	1	15	CATN7-12-XC-D1CB-TB15G17-L11	C2	CATN7-12-XC-D1CB-TB15R17-L11	0
	2	2	1	15	CATN7-12-XC-D1CB-TB15G17-L11	C2	CATN7-12-XC-D1CB-TB15R17-L11	0
0	3	2	1	15	CATN7-16-XC-D1DB-TB15G17-L11	C2	CATN7-16-XC-D1DB-TB15R17-L11	0
	5	2	1	15	CATN7-16-XC-D1DB-TB15G17-L11	C2	CATN7-16-XC-D1DB-TB15R17-L11	0
1	7.5	2	1	20	CATN7-37-XC-D1ED-TB20G17-L11	C2	CATN7-37-XC-D1ED-TB20R17-L11	0
	10	2	1	30	CATN7-37-XC-D1ED-TB30G17-L11	C2	CATN7-37-XC-D1ED-TB30R17-L11	0
2	15	2	1	40	CATN7-43-XC-D1FD-TB40G17-L11	C2	CATN7-43-XC-D1FD-TB40R17-L11	0
	20	2	1	50	CATN7-43-XC-D1FD-TB50G17-L11	C2	CATN7-43-XC-D1FD-TB50R17-L11	0
	25	2	1	60	CATN7-43-XC-D1FD-TB60G17-L11	C2	CATN7-43-XC-D1FD-TB60R17-L11	0
3	30	2	1	80	CATN7-85-XC-EGE-TB80G17-L11	D3	CATN7-85-XC-EGE-TB80R17-L11	0
	40	2	1	100	CATN7-85-XC-EGE-TB100G17-L11	D3	CATN7-85-XC-EGE-TB100R17-L11	0
	50	2	1	125	CATN7-85-XC-EGE-TB125G17-L11	D3	CATN7-85-XC-EGE-TB125R17-L11	0

- Full Voltage Non-Reversing (FVNR) Features include:**
- NEMA-sized CAN7 contactor
 - Three-Phase CEP7 Electronic Overload Relay
 - Control Circuit Transformer
 - Hand-Off-Auto (H-O-A) selector switch
 - Red Run pilot light
 - 2-NO and 1-NC auxiliaries for customer use
 - Class CC Fuse holder as fused primary of CCT
 - Reset pushbutton
 - UL489 600V class thermal-magnetic molded case circuit breaker

See new NEMA Starters Section starting at page 101.1
This page has moved.

NEMA Combination Starters

① HP and NEMA size selection shown for 460V ratings only. Contact your Sprecher + Schuh representative for other voltage applications.

② Contactors are equipped with number and type of auxiliaries indicated. See page C108 to order additional or different auxiliary contacts.
③ Dimensional information starts on page C122.

Series CATN7 575V AC with Thermal-Magnetic Circuit Breaker

NEMA Size	Max HP 3-Phase ⓐ	Auxiliary Contacts per Contactor ⓑ		MCCB Amps	Type 1 Metallic General Purpose (except TBH) Catalog No.	D I M ⓓ	Type 3R Metallic Outdoor Raintight Catalog No.	D I M ⓓ
		NO	NC					
00	0.25	2	1	15	CATN7-12-XD-D1BB-TBH15G17-L11	C2	CATN7-12-XD-D1BB-TBH15R17-L11	0
	0.5	2	1	15	CATN7-12-XD-D1CB-TBH15G17-L11	C2	CATN7-12-XD-D1CB-TBH15R17-L11	0
	0.75	2	1	15	CATN7-12-XD-D1CB-TBH15G17-L11	C2	CATN7-12-XD-D1CB-TBH15R17-L11	0
	1	2	1	15	CATN7-12-XD-D1CB-TBH15G17-L11	C2	CATN7-12-XD-D1CB-TBH15R17-L11	0
	2	2	1	15	CATN7-12-XD-D1CB-TBH15G17-L11	C2	CATN7-12-XD-D1CB-TBH15R17-L11	0
0	3	2	1	15	CATN7-16-XD-D1DB-TBH15G17-L11	C2	CATN7-16-XD-D1DB-TBH15R17-L11	0
	5	2	1	15	CATN7-16-XD-D1DB-TBH15G17-L11	C2	CATN7-16-XD-D1DB-TBH15R17-L11	0
1	7.5 ⓔ	2	1	20	CATN7-37-XD-D1ED-TB20G17-L11	C2	CATN7-37-XD-D1ED-TB20R17-L11	0
	10 ⓔ	2	1	20	CATN7-37-XD-D1FD-TB20G17-L11	C2	CATN7-37-XD-D1ED-TB20R17-L11	0
	7.5	2	1	20	CATN7-37-XD-D1ED-TBH20G17-L11	C2	CATN7-37-XD-D1ED-TBH20R17-L11	0
	10	2	1	20	CATN7-37-XD-D1FD-TBH20G17-L11	C2	CATN7-37-XD-D1FD-TBH20R17-L11	0
2	15 ⓔ	2	1	35	CATN7-43-XD-D1FD-TB35G17-L11	C2	CATN7-43-XD-D1FD-TB35R17-L11	0
	20 ⓔ	2	1	40	CATN7-43-XD-D1FD-TB40G17-L11	C2	CATN7-43-XD-D1FD-TB40R17-L11	0
	25 ⓔ	2	1	50	CATN7-43-XD-D1FD-TB50G17-L11	C2	CATN7-43-XD-D1FD-TB50R17-L11	0
	15	2	1	35	CATN7-43-XD-D1FD-TBH35G17-L11	C2	CATN7-43-XD-D1FD-TBH35R17-L11	0
	20	2	1	40	CATN7-43-XD-D1FD-TBH40G17-L11	C2	CATN7-43-XD-D1FD-TBH40R17-L11	0
	25	2	1	50	CATN7-43-XD-D1FD-TBH50G17-L11	C2	CATN7-43-XD-D1FD-TBH50R17-L11	0
3	30 ⓔ	2	1	60	CATN7-85-XD-EGE-TB60G17-L11	D3	CATN7-85-XD-EGE-TB60R17-L11	0
	40 ⓔ	2	1	80	CATN7-85-XD-EGE-TB80G17-L11	D3	CATN7-85-XD-EGE-TB80R17-L11	0
	50 ⓔ	2	1	100	CATN7-85-XD-EGE-TB100G17-L11	D3	CATN7-85-XD-EGE-TB100R17-L11	0
	30	2	1	60	CATN7-85-XD-EGE-TBH60G17-L11	D3	CATN7-85-XD-EGE-TBH60R17-L11	0
	40	2	1	80	CATN7-85-XD-EGE-TBH80G17-L11	D3	CATN7-85-XD-EGE-TBH80R17-L11	0
	50	2	1	100	CATN7-85-XD-EGE-TBH100G17-L11	D3	CATN7-85-XD-EGE-TBH100R17-L11	0

See new NEMA Starters Section starting at page 101.1

Full Voltage Non-Reversing (FVNR) Features include:

- NEMA-sized CAN7 contactor
- Three-Phase CEP7 Electronic Overload Relay
- Control Circuit Transformer
- Hand-Off-Auto (H-O-A) selector switch
- Red Run pilot light
- 2-NO and 1-NC auxiliaries for customer use
- Class CC Fuse holder as fused primary of CCT
- Reset pushbutton
- UL489 600V class thermal-magnetic molded case circuit breaker

NEMA Combination Starters

ⓐ HP and NEMA size selection shown for 575V ratings only. Contact your Sprecher + Schuh representative for other voltage applications.

ⓑ Contactors are equipped with number and type of auxiliaries indicated. See page C108 to order additional or different auxiliary contacts.

ⓓ Dimensional information starts on page C122.

ⓔ Applicable to 600Y/347V only.

Series CATN7 with Fusible Disconnect (J-Type) ②③

NEMA Size	Maximum Horsepower Three Phase				Fuse Clip Amps	Type 1 General Purpose	DIM	Type 12 [Type 3R ②] Industrial Dusttight	DIM	Type 4 Watertight	DIM	Type 4X Watertight Corrosion Resistant Non-metallic	DIM
	200V	230V	460V	575V		Catalog No.		① Catalog No.		① Catalog No.		① Catalog No.	
						CATN		CATN		CATN		CATN	
00	1-1/2	1-1/2	2	2	30	7-12-*-*♦-JF61G0	C	7-12-*-*♦-JF61D0	C2	7-12-*-*♦-JF61W0	Q	7-12-*-*♦-JF61C0	V1
0	3	3	5	5	30	7-16-*-*♦-JF61G0	C	7-16-*-*♦-JF61D0	C2	7-16-*-*♦-JF61W0	Q	7-16-*-*♦-JF61C0	V1
1	5	5	10	10	30	7-37-*-*♦-JF61G0	C	7-37-*-*♦-JF61D0	C2	7-37-*-*♦-JF61W0	Q	7-37-*-*♦-JF61C0	V1
	7-1/2	7-1/2	~	~	60	7-37-*-*♦-JF62G0	C	7-37-*-*♦-JF62D0	C2	7-37-*-*♦-JF62W0	Q	7-37-*-*♦-JF62C0	V1
2	~	~	~	15	30	7-43-*-*♦-JF61G0	C	7-43-*-*♦-JF61D0	C2	7-43-*-*♦-JF61W0	Q	7-43-*-*♦-JF61C0	V1
	10	10	25	25	60	7-43-*-*♦-JF62G0	C	7-43-*-*♦-JF62D0	C2	7-43-*-*♦-JF62W0	Q	7-43-*-*♦-JF62C0	V1
	~	15	~	~	100	7-43-*-*♦-JF63G0	D3	7-43-*-*♦-JF63D0	Q	7-43-*-*♦-JF63W0	Q	7-43-*-*♦-JF63C0	W1
3	~	~	30	40	60	7-85-*-*♦-JF62G0	D3	7-85-*-*♦-JF62D0	Q	7-85-*-*♦-JF62W0	Q	7-85-*-*♦-JF62C0	W2
	20	25	50	50	100	7-85-*-*♦-JF63G0	D3	7-85-*-*♦-JF63D0	Q	7-85-*-*♦-JF63W0	Q	7-85-*-*♦-JF63C0	V1
	25	30	~	~	200	7-85-*-*♦-JF64G0	G	7-85-*-*♦-JF64D0	T	7-85-*-*♦-JF64W0	T	7-85-*-*♦-JF64C0	V1

This page has moved.
 See new NEMA Starters Section starting at page 101.1

NOTE: Catalog numbers and enclosure dimensions reflect contactors with AC coils. For DC coils, select Coil Code from the DC Coil Code table on page C104 and follow the instructions for modifying catalog numbers.

Ordering Instructions

Specify Catalog Number	
Replace (*) with Coil Code	See page C104
Replace (♦) with O/L Relay	See pages C105-C106
Factory Modifications available	See pages C107-C111

- ① Dimensional information starts on page C122.
- ② For Type 3R outdoor applications, replace "D" in catalog number with an "R". Dimensions may change. For example number CATN7-16-*-*♦-JF61D0 becomes CATN7-16-*-*♦-JF61R0. Price remains the same.
- ③ Fusible combo starter uses the L11 Disconnect. Fuse clips accept "J" type fuses. Power fuses not supplied.
- ④ A Red and Yellow Handle may be selected instead of the standard Black handle. Change "JF" to "LF" in catalog number.

Series CATN7 208V AC with Fusible Disconnect (J-Type) ②③

NEMA Size	Max HP 3-Phase ①	Auxiliary Contacts per Contactor ②		Fuse Clip Amps	Type 1 Metallic General Purpose	DIM	Type 3R Metallic Outdoor Raintight	DIM
		NO	NC		Catalog No.		④ Catalog No.	
00	0.25	2	1	30	CATN7-12-XA-D1BB-JF61G17-L11	C	CATN7-12-XA-D1BB-JF61R17-L11	0
	0.5	2	1	30	CATN7-12-XA-D1CB-JF61G17-L11	C	CATN7-12-XA-D1CB-JF61R17-L11	0
	0.75	2	1	30	CATN7-12-XA-D1CB-JF61G17-L11	C	CATN7-12-XA-D1CB-JF61R17-L11	0
	1	2	1	30	CATN7-12-XA-D1CB-JF61G17-L11	C	CATN7-12-XA-D1CB-JF61R17-L11	0
	1.5	2	1	30	CATN7-12-XA-D1DB-JF61G17-L11	C	CATN7-12-XA-D1DB-JF61R17-L11	0
0	2	2	1	30	CATN7-16-XA-D1DB-JF61G17-L11	C	CATN7-16-XA-D1DB-JF61R17-L11	0
	3	2	1	30	CATN7-16-XA-D1DB-JF61G17-L11	C	CATN7-16-XA-D1DB-JF61R17-L11	0
1	5	2	1	30	CATN7-37-XA-D1ED-JF61G17-L11	C	CATN7-37-XA-D1ED-JF61R17-L11	0
	7.5	2	1	60	CATN7-37-XA-D1ED-JF62G17-L11	C	CATN7-37-XA-D1ED-JF62R17-L11	0
2	10	2	1	60	CATN7-43-XA-D1FD-JF62G17-L11	C	CATN7-43-XA-D1FD-JF62R17-L11	0
3	15	2	1	100	CATN7-85-XA-EGE-JF63G17-L11	D3	CATN7-85-XA-EGE-JF63R17-L11	0
	20	2	1	100	CATN7-85-XA-EGE-JF63G17-L11	D3	CATN7-85-XA-EGE-JF63R17-L11	0
	25	2	1	200	CATN7-85-XA-EGE-JF64G17-L11	G	CATN7-85-XA-EGE-JF64R17-L11	T

Full Voltage Non-Reversing (FVNR) Features include:

- NEMA-sized CAN7 contactor
- Three-Phase CEP7 Electronic Overload Relay
- Control Circuit Transformer
- Hand-Off-Auto (H-O-A) selector switch
- Red Run pilot light
- 2-NO and 1-NC auxiliaries for customer use
- Class CC Fuse holder as fused primary of CCT
- UL98 fusible L11 disconnect
- Reset pushbutton

NEMA Combination Starters

Series CATN7 230V AC with Fusible Disconnect (J-Type) ②③

NEMA Size	Max HP 3-Phase ①	Auxiliary Contacts per Contactor ②		Fuse Clip Amps	Type 1 Metallic General Purpose	DIM	Type 3R Metallic Outdoor Raintight	DIM
		NO	NC		Catalog No.		④ Catalog No.	
00	0.25	2	1	30	CATN7-12-XB-D1BB-JF61G17-L11	C	CATN7-12-XB-D1BB-JF61R17-L11	0
	0.5	2	1	30	CATN7-12-XB-D1CB-JF61G17-L11	C	CATN7-12-XB-D1CB-JF61R17-L11	0
	0.75	2	1	30	CATN7-12-XB-D1CB-JF61G17-L11	C	CATN7-12-XB-D1CB-JF61R17-L11	0
	1	2	1	30	CATN7-12-XB-D1CB-JF61G17-L11	C	CATN7-12-XB-D1CB-JF61R17-L11	0
	1.5	2	1	30	CATN7-12-XB-D1CB-JF61G17-L11	C	CATN7-12-XB-D1CB-JF61R17-L11	0
0	2	2	1	30	CATN7-16-XB-D1DB-JF61G17-L11	C	CATN7-16-XB-D1DB-JF61R17-L11	0
	3	2	1	30	CATN7-16-XB-D1DB-JF61G17-L11	C	CATN7-16-XB-D1DB-JF61R17-L11	0
1	5	2	1	30	CATN7-37-XB-D1ED-JF61G17-L11	C	CATN7-37-XB-D1ED-JF61R17-L11	0
	7.5	2	1	60	CATN7-37-XB-D1ED-JF62G17-L11	C	CATN7-37-XB-D1ED-JF62R17-L11	0
2	10	2	1	60	CATN7-43-XB-D1FD-JF62G17-L11	C	CATN7-43-XB-D1FD-JF62R17-L11	0
	15	2	1	100	CATN7-43-XB-D1FD-JF63G17-L11	C	CATN7-43-XB-D1FD-JF63R17-L11	0
3	20	2	1	100	CATN7-85-XB-EGE-JF63G17-L11	D3	CATN7-85-XB-EGE-JF63R17-L11	0
	25	2	1	100	CATN7-85-XB-EGE-JF63G17-L11	D3	CATN7-85-XB-EGE-JF63R17-L11	0
	30	2	1	200	CATN7-85-XB-EGE-JF64G17-L11	G	CATN7-85-XB-EGE-JF64R17-L11	T

Full Voltage Non-Reversing (FVNR) Features include:

- NEMA-sized CAN7 contactor
- Three-Phase CEP7 Electronic Overload Relay
- Control Circuit Transformer
- Hand-Off-Auto (H-O-A) selector switch
- Red Run pilot light
- 2-NO and 1-NC auxiliaries for customer use
- Class CC Fuse holder as fused primary of CCT
- UL98 fusible L11 disconnect
- Reset pushbutton

This page has moved. See new NEMA Starters Section starting at page 101.1

- ① HP and NEMA size selection shown for 208V ratings only. Contact your Sprecher + Schuh representative for other voltage application.
- ② Contactors are equipped with number and type of auxiliaries indicated. See page C108 to order additional or different auxiliary contacts.
- ③ Fusible combo starter uses the L11 Disconnect. Fuse clips accept "J" type fuses. Power fuses not supplied.
- ④ A Red and Yellow Handle may be selected instead of the standard Black handle. Change "JF" to "LF" in catalog number.
- ⑤ HP and NEMA size selection shown for 230V ratings only. Contact your Sprecher + Schuh representative for other voltage application.
- ⑥ Dimensional information starts on page C122.

Series CATN7 460V AC with Fusible Disconnect (J-Type) ②③

NEMA Size	Max HP 3-Phase ④	Auxiliary Contacts per Contactor ⑤		Fuse Clip Amps	Type 1 Metallic General Purpose	DIM	Type 3R Metallic Outdoor Raintight	DIM
		460V	NO		NC		Catalog No.	
00	0.25	2	1	30	CATN7-12-XC-D18B-JF61G17-L11	C	CATN7-12-XC-D18B-JF61R17-L11	0
	0.5	2	1	30	CATN7-12-XC-D1CB-JF61G17-L11	C	CATN7-12-XC-D1CB-JF61R17-L11	0
	0.75	2	1	30	CATN7-12-XC-D1CB-JF61G17-L11	C	CATN7-12-XC-D1CB-JF61R17-L11	0
	1	2	1	30	CATN7-12-XC-D1CB-JF61G17-L11	C	CATN7-12-XC-D1CB-JF61R17-L11	0
	1.5	2	1	30	CATN7-12-XC-D1CB-JF61G17-L11	C	CATN7-12-XC-D1CB-JF61R17-L11	0
0	2	2	1	30	CATN7-12-XC-D1CB-JF61G17-L11	C	CATN7-12-XC-D1CB-JF61R17-L11	0
	3	2	1	30	CATN7-16-XC-D1DB-JF61G17-L11	C	CATN7-16-XC-D1DB-JF61R17-L11	0
1	5	2	1	30	CATN7-16-XC-D1DB-JF61G17-L11	C	CATN7-16-XC-D1DB-JF61R17-L11	0
	7.5	2	1	30	CATN7-37-XC-D1ED-JF61G17-L11	C	CATN7-37-XC-D1ED-JF61R17-L11	0
2	10	2	1	30	CATN7-37-XC-D1ED-JF61G17-L11	C	CATN7-37-XC-D1ED-JF61R17-L11	0
	15	2	1	60	CATN7-43-XC-D1FD-JF62G17-L11	C	CATN7-43-XC-D1FD-JF62R17-L11	0
	20	2	1	60	CATN7-43-XC-D1FD-JF62G17-L11	C	CATN7-43-XC-D1FD-JF62R17-L11	0
3	25	2	1	60	CATN7-43-XC-D1FD-JF62G17-L11	C	CATN7-43-XC-D1FD-JF62R17-L11	0
	30	2	1	60	CATN7-85-XC-EGE-JF62G17-L11	D3	CATN7-85-XC-EGE-JF62R17-L11	0
	40	2	1	100	CATN7-85-XC-EGE-JF63G17-L11	D3	CATN7-85-XC-EGE-JF63R17-L11	0
	50	2	1	100	CATN7-85-XC-EGE-JF63G17-L11	D3	CATN7-85-XC-EGE-JF63R17-L11	0

Full Voltage Non-Reversing (FVNR) Features include:

- NEMA-sized CAN7 contactor
- Three-Phase CEP7 Electronic Overload Relay
- Control Circuit Transformer
- Hand-Off-Auto (H-O-A) selector switch
- Red Run pilot light
- 2-NO and 1-NC auxiliaries for customer use
- Class CC Fuse holder as fused primary of CCT
- UL98 fusible L11 disconnect
- Reset pushbutton

This page has moved.
See new NEMA Starters Section starting at page 101.1

Series CATN7 575V AC with Fusible Disconnect (J-Type) ②③

NEMA Size	Max HP 3-Phase ④	Auxiliary Contacts per Contactor ⑤		Fuse Clip Amps	Type 1 Metallic General Purpose	DIM	Type 3R Metallic Outdoor Raintight	DIM
		575V	NO		NC		Catalog No.	
00	0.25	2	1	30	CATN7-12-XD-D18B-JF61G17-L11	C	CATN7-12-XD-D18B-JF61R17-L11	0
	0.5	2	1	30	CATN7-12-XD-D1CB-JF61G17-L11	C	CATN7-12-XD-D1CB-JF61R17-L11	0
	0.75	2	1	30	CATN7-12-XD-D1CB-JF61G17-L11	C	CATN7-12-XD-D1CB-JF61R17-L11	0
	1	2	1	30	CATN7-12-XD-D1CB-JF61G17-L11	C	CATN7-12-XD-D1CB-JF61R17-L11	0
	1.5	2	1	30	CATN7-12-XD-D1CB-JF61G17-L11	C	CATN7-12-XD-D1CB-JF61R17-L11	0
0	2	2	1	30	CATN7-12-XD-D1CB-JF61G17-L11	C	CATN7-12-XD-D1CB-JF61R17-L11	0
	3	2	1	30	CATN7-16-XD-D1DB-JF61G17-L11	C	CATN7-16-XD-D1DB-JF61R17-L11	0
1	5	2	1	30	CATN7-16-XD-D1DB-JF61G17-L11	C	CATN7-16-XD-D1DB-JF61R17-L11	0
	7.5	2	1	30	CATN7-37-XD-D1ED-JF61G17-L11	C	CATN7-37-XD-D1ED-JF61R17-L11	0
2	10	2	1	30	CATN7-37-XD-D1ED-JF61G17-L11	C	CATN7-37-XD-D1ED-JF61R17-L11	0
	15	2	1	60	CATN7-43-XD-D1FD-JF61G17-L11	C	CATN7-43-XD-D1FD-JF61R17-L11	0
	20	2	1	60	CATN7-43-XD-D1FD-JF61G17-L11	C	CATN7-43-XD-D1FD-JF61R17-L11	0
3	25	2	1	60	CATN7-43-XD-D1FD-JF61G17-L11	C	CATN7-43-XD-D1FD-JF61R17-L11	0
	30	2	1	60	CATN7-85-XD-EGE-JF62G17-L11	D3	CATN7-85-XD-EGE-JF62R17-L11	0
	40	2	1	60	CATN7-85-XD-EGE-JF62G17-L11	D3	CATN7-85-XD-EGE-JF62R17-L11	0
	50	2	1	100	CATN7-85-XD-EGE-JF63G17-L11	D3	CATN7-85-XD-EGE-JF63R17-L11	0

Full Voltage Non-Reversing (FVNR) Features include:

- NEMA-sized CAN7 contactor
- Three-Phase CEP7 Electronic Overload Relay
- Control Circuit Transformer
- Hand-Off-Auto (H-O-A) selector switch
- Red Run pilot light
- 2-NO and 1-NC auxiliaries for customer use
- Class CC Fuse holder as fused primary of CCT
- UL98 fusible L11 disconnect
- Reset pushbutton

- ① HP and NEMA size selection shown for 460V ratings only. Contact your Sprecher + Schuh representative for other voltage application.
- ② Contactors are equipped with number and type of auxiliaries indicated. See page C108 to order additional or different auxiliary contacts.
- ③ Fusible combo starter uses the L11 Disconnect. Fuse clips accept "J" type fuses. Power fuses not supplied.
- ④ A Red and Yellow Handle may be selected instead of the standard Black handle. Change "JF" to "LF" in catalog number.
- ⑤ HP and NEMA size selection shown for 575V ratings only. Contact your Sprecher + Schuh representative for other voltage application.
- ⑥ Dimensional information starts on page C122.

Series CATN7 with Non-Fusible Disconnect ☉☉

NEMA Size	Maximum Horsepower Three Phase				Disc Size/Amps	Type 1 General Purpose	D I M	Type 12 [Type 3R ☉] Industrial Dusttight	D I M	Type 4 Watertight	D I M	Type 4X Watertight Corrosion Resistant Non-metallic	D I M
	200V	230V	460V	575V		Catalog No.	☉	Catalog No.	☉	Catalog No.	☉	Catalog No.	☉
						CATN		CATN		CATN		CATN	
00	1-1/2	1-1/2	2	2	30	7-12-*☉-JU61G0	C	7-12-*☉-JU61D0	C2	7-12-*☉-JU61W0	Q	7-12-*☉-JU61C0	V1
0	3	3	5	5	30	7-16-*☉-JU61G0	C	7-16-*☉-JU61D0	C2	7-16-*☉-JU61W0	Q	7-16-*☉-JU61C0	V1
1	5	7-1/2	10	10	30	7-37-*☉-JU61G0	C	7-37-*☉-JU61D0	C2	7-37-*☉-JU61W0	Q	7-37-*☉-JU61C0	V1
	7-1/2	~	~	~	60	7-37-*☉-JU62G0	C	7-37-*☉-JU62D0	C2	7-37-*☉-JU62W0	Q	7-37-*☉-JU62C0	V1
2	~	~	15	15	30	7-43-*☉-JU61G0	C	7-43-*☉-JU61D0	C2	7-43-*☉-JU61W0	Q	7-43-*☉-JU61C0	V1
	10	15	25	25	60	7-43-*☉-JU62G0	C	7-43-*☉-JU62D0	C2	7-43-*☉-JU62W0	Q	7-43-*☉-JU62C0	V1
3	15	~	30	40	60	7-85-*☉-JU62G0	D3	7-85-*☉-JU62D0	Q	7-85-*☉-JU62W0	Q	7-85-*☉-JU62C0	W2
	25	30	50	50	100	7-85-*☉-JU63G0	D3	7-85-*☉-JU63D0	Q	7-85-*☉-JU63W0	Q	7-85-*☉-JU63C0	W2

This page has moved. See new NEMA Starters Section starting at page 101.1

NOTE: Catalog numbers and enclosure dimensions reflect contactors with AC coils. For DC coils, select Coil Code from the DC Coil Code table on page C104 and follow the instructions for modifying catalog numbers.

Ordering Instructions

Specify Catalog Number	
Replace (*) with Coil Code	See page C104
Replace (☉) with O/L Relay	See pages C105-C106
Factory Modifications available	See pages C107-C111

- ☉ Dimensional information starts on page C122.
- ☉ For Type 3R outdoor applications, replace "D" in catalog number with an "R". Dimensions may change. For example number CATN7-16-*☉-JU61D0 becomes CATN7-16-*☉-JU61R0. Price remains the same.
- ☉ Non-fusible combo-starter uses the L11 Non-Fusible Disconnect.
- ☉ A Red and Yellow Handle may be selected instead of the standard Black handle. Change "JU" to "LU" in catalog number.

Series CATN7 @208V AC with Non-Fusible Disconnect

NEMA Size	Max HP 3-Phase	Auxiliary Contacts per Contactor		Disc Size/ Amps	Type 1 Metallic General Purpose	DIM	Type 3R Metallic Outdoor Raintight	DIM
		208V	NO		NC		Catalog No.	
00	0.25	2	1	30	CATN7-12-XA-D1BB-JU61G17-L11	C	CATN7-12-XA-D1BB-JU61R17-L11	0
	0.5	2	1	30	CATN7-12-XA-D1CB-JU61G17-L11	C	CATN7-12-XA-D1CB-JU61R17-L11	0
	0.75	2	1	30	CATN7-12-XA-D1CB-JU61G17-L11	C	CATN7-12-XA-D1CB-JU61R17-L11	0
	1	2	1	30	CATN7-12-XA-D1CB-JU61G17-L11	C	CATN7-12-XA-D1CB-JU61R17-L11	0
	1.5	2	1	30	CATN7-12-XA-D1DB-JU61G17-L11	C	CATN7-12-XA-D1DB-JU61R17-L11	0
0	2	2	1	30	CATN7-16-XA-D1DB-JU61G17-L11	C	CATN7-16-XA-D1DB-JU61R17-L11	0
	3	2	1	30	CATN7-16-XA-D1DB-JU61G17-L11	C	CATN7-16-XA-D1DB-JU61R17-L11	0
1	5	2	1	30	CATN7-37-XA-D1ED-JU61G17-L11	C	CATN7-37-XA-D1ED-JU61R17-L11	0
	7.5	2	1	30	CATN7-37-XA-D1ED-JU61G17-L11	C	CATN7-37-XA-D1ED-JU61R17-L11	0
2	10	2	1	60	CATN7-43-XA-D1FD-JU62G17-L11	C	CATN7-43-XA-D1FD-JU62R17-L11	0
	15	2	1	60	CATN7-85-XA-EGE-JU62G17-L11	D3	CATN7-85-XA-EGE-JU62R17-L11	0
3	20	2	1	100	CATN7-85-XA-EGE-JU63G17-L11	D3	CATN7-85-XA-EGE-JU63R17-L11	0
	25	2	1	100	CATN7-85-XA-EGE-JU63G17-L11	D3	CATN7-85-XA-EGE-JU63R17-L11	0

Full Voltage Non-Reversing (FVNR) Features include:

- NEMA-sized CAN7 contactor
- Three-Phase CEP7 Electronic Overload Relay
- Control Circuit Transformer
- Hand-Off-Auto (H-O-A) selector switch
- Red Run pilot light
- 2-NO and 1-NC auxiliaries for customer use
- Class CC Fuse holder as fused primary of CCT
- UL98 non-fusible L11 disconnect switch
- Reset pushbutton

Series CATN7 @230V AC with Non-Fusible Disconnect

NEMA Size	Max HP 3-Phase	Auxiliary Contacts per Contactor		Disc Size/ Amps	Type 1 Metallic General Purpose	DIM	Type 3R Metallic Outdoor Raintight	DIM
		230V	NO		NC		Catalog No.	
00	0.25	2	1	30	CATN7-12-XB-D1BB-JU61G17-L11	C	CATN7-12-XB-D1BB-JU61R17-L11	0
	0.5	2	1	30	CATN7-12-XB-D1CB-JU61G17-L11	C	CATN7-12-XB-D1CB-JU61R17-L11	0
	0.75	2	1	30	CATN7-12-XB-D1CB-JU61G17-L11	C	CATN7-12-XB-D1CB-JU61R17-L11	0
	1	2	1	30	CATN7-12-XB-D1CB-JU61G17-L11	C	CATN7-12-XB-D1CB-JU61R17-L11	0
	1.5	2	1	30	CATN7-12-XB-D1CB-JU61G17-L11	C	CATN7-12-XB-D1CB-JU61R17-L11	0
0	2	2	1	30	CATN7-16-XB-D1DB-JU61G17-L11	C	CATN7-16-XB-D1DB-JU61R17-L11	0
	3	2	1	30	CATN7-16-XB-D1DB-JU61G17-L11	C	CATN7-16-XB-D1DB-JU61R17-L11	0
1	5	2	1	30	CATN7-37-XB-D1ED-JU61G17-L11	C	CATN7-37-XB-D1ED-JU61R17-L11	0
	7.5	2	1	30	CATN7-37-XB-D1ED-JU61G17-L11	C	CATN7-37-XB-D1ED-JU61R17-L11	0
2	10	2	1	60	CATN7-43-XB-D1FD-JU62G17-L11	C	CATN7-43-XB-D1FD-JU62R17-L11	0
	15	2	1	60	CATN7-43-XB-D1FD-JU62G17-L11	C	CATN7-43-XB-D1FD-JU62R17-L11	0
3	20	2	1	100	CATN7-85-XB-EGE-JU63G17-L11	D3	CATN7-85-XB-EGE-JU63R17-L11	0
	25	2	1	100	CATN7-85-XB-EGE-JU63G17-L11	D3	CATN7-85-XB-EGE-JU63R17-L11	0
	30	2	1	100	CATN7-85-XB-EGE-JU63G17-L11	D3	CATN7-85-XB-EGE-JU63R17-L11	0

Full Voltage Non-Reversing (FVNR) Features include:

- NEMA-sized CAN7 contactor
- Three-Phase CEP7 Electronic Overload Relay
- Control Circuit Transformer
- Hand-Off-Auto (H-O-A) selector switch
- Red Run pilot light
- 2-NO and 1-NC auxiliaries for customer use
- Class CC Fuse holder as fused primary of CCT
- UL98 non-fusible L11 disconnect switch
- Reset pushbutton

This page has moved.
See new NEMA Starters Section starting at page 101.1

- ① HP and NEMA size selection shown for 208V ratings only. Contact your Sprecher + Schuh representative for other voltage application.
- ② Contactors are equipped with number and type of auxiliaries indicated. See page C108 to order additional or different auxiliary contacts.
- ③ Fusible combo starter uses the L11 Disconnect. Fuse clips accept "J" type fuses. Power fuses not supplied.
- ④ A Red and Yellow Handle may be selected instead of the standard Black handle. Change "JF" to "LF" in catalog number.
- ⑤ HP and NEMA size selection shown for 230V ratings only. Contact your Sprecher + Schuh representative for other voltage application.
- ⑥ Dimensional information starts on page C122.

Series CATN7 @460V AC with Non-Fusible Disconnect

NEMA Size	Max HP 3-Phase	Auxiliary Contacts per Contactor		Disc Size/ Amps	Type 1 Metallic General Purpose	DIM	Type 3R Metallic Outdoor Raintight	DIM
		NO	NC		Catalog No.		Catalog No.	
00	0.25	2	1	30	CATN7-12-XC-D1BB-JU61G17-L11	C	CATN7-12-XC-D1BB-JU61R17-L11	0
	0.5	2	1	30	CATN7-12-XC-D1CB-JU61G17-L11	C	CATN7-12-XC-D1CB-JU61R17-L11	0
	0.75	2	1	30	CATN7-12-XC-D1CB-JU61G17-L11	C	CATN7-12-XC-D1CB-JU61R17-L11	0
	1	2	1	30	CATN7-12-XC-D1CB-JU61G17-L11	C	CATN7-12-XC-D1CB-JU61R17-L11	0
	1.5	2	1	30	CATN7-12-XC-D1CB-JU61G17-L11	C	CATN7-12-XC-D1CB-JU61R17-L11	0
	2	2	1	30	CATN7-12-XC-D1CB-JU61G17-L11	C	CATN7-12-XC-D1CB-JU61R17-L11	0
0	3	2	1	30	CATN7-16-XC-D1DB-JU61G17-L11	C	CATN7-16-XC-D1DB-JU61R17-L11	0
	5	2	1	30	CATN7-16-XC-D1DB-JU61G17-L11	C	CATN7-16-XC-D1DB-JU61R17-L11	0
1	7.5	2	1	30	CATN7-37-XC-D1ED-JU61G17-L11	C	CATN7-37-XC-D1ED-JU61R17-L11	0
	10	2	1	30	CATN7-37-XC-D1ED-JU61G17-L11	C	CATN7-37-XC-D1ED-JU61R17-L11	0
2	15	2	1	30	CATN7-43-XC-D1FD-JU61G17-L11	C	CATN7-43-XC-D1FD-JU61R17-L11	0
	20	2	1	60	CATN7-43-XC-D1FD-JU62G17-L11	C	CATN7-43-XC-D1FD-JU62R17-L11	0
	25	2	1	60	CATN7-43-XC-D1FD-JU62G17-L11	C	CATN7-43-XC-D1FD-JU62R17-L11	0
	30	2	1	60	CATN7-85-XC-EGE-JU62G17-L11	D3	CATN7-85-XC-EGE-JU62R17-L11	0
3	40	2	1	100	CATN7-85-XC-EGE-JU63G17-L11	D3	CATN7-85-XC-EGE-JU63R17-L11	0
	50	2	1	100	CATN7-85-XC-EGE-JU63G17-L11	D3	CATN7-85-XC-EGE-JU63R17-L11	0

Full Voltage Non-Reversing (FVNR) Features include:

- NEMA-sized CAN7 contactor
- Three-Phase CEP7 Electronic Overload Relay
- Control Circuit Transformer
- Hand-Off-Auto (H-O-A) selector switch
- Red Run pilot light
- 2-NO and 1-NC auxiliaries for customer use
- Class CC Fuse holder as fused primary of CCT
- UL98 non-fusible L11 disconnect switch
- Reset pushbutton

NEMA Combination Starters

This page has moved.
See new NEMA Starters Section starting at page 101.1

Series CATN7 @575V AC with Non-Fusible Disconnect

NEMA Size	Max HP 3-Phase	Auxiliary Contacts per Contactor		Disc Size/ Amps	Type 1 Metallic General Purpose	DIM	Type 3R Metallic Outdoor Raintight	DIM
		NO	NC		Catalog No.		Catalog No.	
00	0.25	2	1	30	CATN7-12-XD-D1BB-JU61G17-L11	C	CATN7-12-XD-D1BB-JU61R17-L11	0
	0.5	2	1	30	CATN7-12-XD-D1CB-JU61G17-L11	C	CATN7-12-XD-D1CB-JU61R17-L11	0
	0.75	2	1	30	CATN7-12-XD-D1CB-JU61G17-L11	C	CATN7-12-XD-D1CB-JU61R17-L11	0
	1	2	1	30	CATN7-12-XD-D1CB-JU61G17-L11	C	CATN7-12-XD-D1CB-JU61R17-L11	0
	1.5	2	1	30	CATN7-12-XD-D1CB-JU61G17-L11	C	CATN7-12-XD-D1CB-JU61R17-L11	0
	2	2	1	30	CATN7-12-XD-D1CB-JU61G17-L11	C	CATN7-12-XD-D1CB-JU61R17-L11	0
0	3	2	1	30	CATN7-16-XD-D1DB-JU61G17-L11	C	CATN7-16-XD-D1DB-JU61R17-L11	0
	5	2	1	30	CATN7-16-XD-D1DB-JU61G17-L11	C	CATN7-16-XD-D1DB-JU61R17-L11	0
1	7.5	2	1	30	CATN7-37-XD-D1ED-JU61G17-L11	C	CATN7-37-XD-D1ED-JU61R17-L11	0
	10	2	1	30	CATN7-37-XD-D1ED-JU61G17-L11	C	CATN7-37-XD-D1ED-JU61R17-L11	0
2	15	2	1	30	CATN7-43-XD-D1FD-JU61G17-L11	C	CATN7-43-XD-D1FD-JU61R17-L11	0
	20	2	1	30	CATN7-43-XD-D1FD-JU61G17-L11	C	CATN7-43-XD-D1FD-JU61R17-L11	0
	25	2	1	60	CATN7-43-XD-D1FD-JU62G17-L11	C	CATN7-43-XD-D1FD-JU62R17-L11	0
	30	2	1	60	CATN7-85-XD-EGE-JU62G17-L11	D3	CATN7-85-XD-EGE-JU62R17-L11	0
3	40	2	1	60	CATN7-85-XD-EGE-JU62G17-L11	D3	CATN7-85-XD-EGE-JU62R17-L11	0
	50	2	1	100	CATN7-85-XD-EGE-JU63G17-L11	D3	CATN7-85-XD-EGE-JU63R17-L11	0

Full Voltage Non-Reversing (FVNR) Features include:

- NEMA-sized CAN7 contactor
- Three-Phase CEP7 Electronic Overload Relay
- Control Circuit Transformer
- Hand-Off-Auto (H-O-A) selector switch
- Red Run pilot light
- 2-NO and 1-NC auxiliaries for customer use
- Class CC Fuse holder as fused primary of CCT
- UL98 non-fusible L11 disconnect switch
- Reset pushbutton

- ① HP and NEMA size selection shown for 460V ratings only. Contact your Sprecher + Schuh representative for other voltage application.
- ② Contactors are equipped with number and type of auxiliaries indicated. See page C108 to order additional or different auxiliary contacts.
- ③ Fusible combo starter uses the L11 Disconnect. Fuse clips accept "J" type fuses. Power fuses not supplied.
- ④ A Red and Yellow Handle may be selected instead of the standard Black handle. Change "JF" to "LF" in catalog number.
- ⑤ HP and NEMA size selection shown for 575V ratings only. Contact your Sprecher + Schuh representative for other voltage application.
- ⑥ Dimensional information starts on page C122.