

Series CDP2 Definite Purpose Contactors

High performance economical contactors for commercial applications up to 90A



Sprecher + Schuh's Definite Purpose contactors are ideal for commercial applications including air conditioning, refrigeration, resistive heating and many other installations where a low cost, high performance contactor is needed. These devices offer flexibility and are designed to meet or exceed electrical and mechanical requirements as defined by definite purpose contactor standards.

Popular sizes for most applications

The CDP2 series consists of one, two, three and four pole contactors rated to 600V AC. Three pole devices range up to 90A, while the one and two pole models are rated to 40A. Four pole contactors are also available ranging from 25A to 40A.

Flexibility and convenience make installation easy

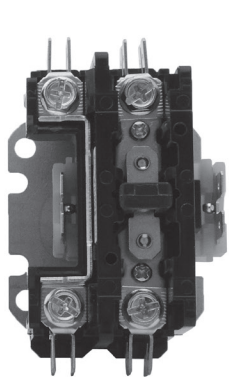
CDP2 contactors are compact in size and offer three convenient methods of wire connection: quick connect terminals, screws or box lugs. Box lugs are standard on 40A and larger contactors. Other models come standard with combination quick connect terminals and screws that accept hex, slotted or phillips screwdrivers.

Standard Features

- Universal mounting plate
- 25A & 30A have screw power terminals that will accept ring-tongue terminals
- 40A and larger have box power terminals
- Dual quick-connect power terminals on all sizes
- Dual quick-connect coil terminals on all sizes
- Double break power contact design with feed-thru wiring
- Class B (130°C) coil insulation
- Double E magnet assembly

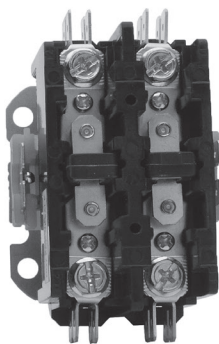
Optional Features

- SPDT auxiliary contacts optional on 3- and 4-pole contactors (max of two)
- Optional covers for 1- and 2-pole contactors
- Mechanical interlock for 3-pole contactors



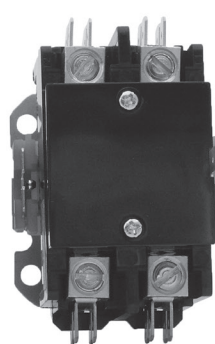
One Pole

30A
40A



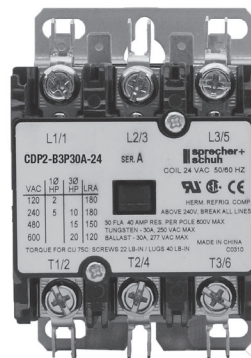
Two Pole

30A



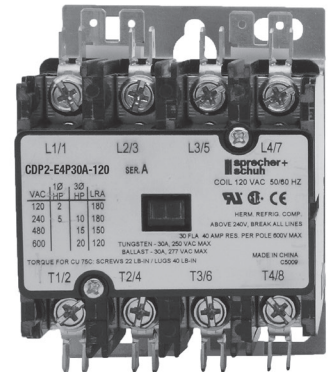
Two Pole

40A



Three Pole

30A
40A
50A
60A
75A
90A



Four Pole

30A
40A

Compare These Features

Built-in Shock Absorber
Reduces contact bounce for longer life.

Coil Dust Cover
Keeps dust and dirt away from magnet and coil area.

Coil
Class B (1300 C Insulation System) with wide range of voltages and 50/60 Hz ratings. Includes shading coil that reduces contact chatter.

Snap-on Auxiliary Contact
(optional on 3 and 4 pole contactors)
One or two SPDT (shown) available.
Also 1NO and 1NC with 600V AC rating.

Base Assembly
High arc resistant polyester holds stationary terminals, positions actuator and magnet/coil assembly.

Industry Standard Mounting Plate
Easily accessible mounting holes.

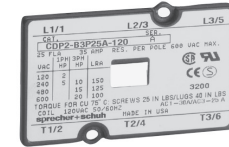
Coil Terminals
#6 - 32 screw and one .250 Quick Connect or Dual .250 Quick Connects (will accept two insulated quick connect terminals).

Double E Magnet Assembly
Provides optimal performance with reduced power consumption

Stationary Terminal
One piece terminal design with integral dual .250 Quick Connects. Meets NEMA standard for spacing without insulated terminals.

Movable Contacts
Heavy duty silver cadmium oxide composition to resist welding and contact erosion for greater reliability

Actuator
Molded from high arc resistant polyester, holds upper magnet, movable contacts and contact springs position.



Quick Selection Guide

| One and Two Pole Definite Purpose Contactors with AC Coil - See page A152 | | | | |
|---|-------------------|----------------------------|--------------------------------|---|
| CDP2 ① | A | 1P | 30A | 24 |
| Type | Frame Size | Poles | Amp Rating | Coil Voltage |
| Definite Purpose | A = 30 & 40A | 1P = 1 pole 2P = 2 pole | 30A = 30 amps 40A = 40 amps | 24 = 24 volts 120 = 120 volts 220W = 208-240 volts 277 = 277 volts |

| Three Pole Definite Purpose Contactors with AC Coil- See page A153 | | | | |
|--|--|--------------|--|--|
| CDP2 ①② | B | 3P | 30A | 24 |
| Type | Frame Size | Poles | Amp Rating | Coil Voltage |
| Definite Purpose | B = 30 & 40A C = 50 & 60A D = 75 & 90A | 3P = 3 poles | 30A = 30 amps 40A = 40 amps 50A = 50 amps 60A = 60 amps 75A = 75 amps 90A = 90 amps | 24 = 24 volts 120 = 120 volts 220W = 208-240 volts 277 = 277 volts 480 = 480 volts |

| Four Pole Definite Purpose Contactors with AC Coil - See page A154 | | | | |
|--|-------------------|--------------|---|--|
| CDP2 ①② | E | 4P | 25A | 24 |
| Type | Frame Size | Poles | Amp Rating | Coil Voltage |
| Definite Purpose | E = 25...40A | 4P = 4 poles | 25A = 25 amps 30A = 30 amps 40A = 40 amps | 24 = 24 volts 120 = 120 volts 220W = 208-240 volts 277 = 277 volts 480 = 480 volts |

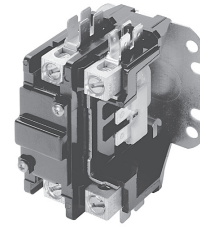
- ① Screw power terminals standard on 30A. Box lug power terminals standard for 40A and larger.
- ② Box lugs on 30A available with volume special order only.

A

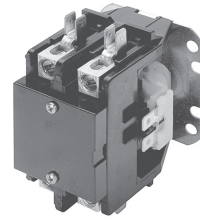
CDP2 Contactors

One and Two Pole Definite Purpose Contactors with AC Coil (Open type only) ④

| Full Load Amps | Poles | Locked Rotor Amps | | | Resistive Amps ② | Maximum H.P. | | Catalog Number | Std. Pkg. |
|----------------|-------|-------------------|------|------|------------------|--------------|--------|-----------------|-----------|
| | | 240V ② | 480V | 600V | | 1Ø | | | |
| | | | | | | 120V | 240V ② | | |
| 30 ① | 1 ⑥ | 150 | 75 | 50 | 40 | 1 | 2 | CDP2-A1P30A-* ⑤ | 50 |
| 30 ① | 2 | 150 | 125 | 100 | 40 | 2 | 3 | CDP2-A2P30A-* ⑤ | 50 |
| 40 | 1 ⑥ | 200 | 150 | 120 | 50 | 2 | 3 | CDP2-A1P40A-* ⑤ | 50 |
| 40 | 2 | 200 | 150 | 120 | 50 | 2 | 3 | CDP2-A2P40A-* ⑤ | 50 |




Series CDP2 1-pole contactor



Series CDP2 2-pole contactor (with optional cover)

Accessories

| Accessory | Description | For use with... | Catalog Number |
|---|---|----------------------------------|--|
|  | Contactor Cover - Prevents foreign particles from entering contactor. Covers current carrying parts. | CDP2-A1P30A... CDP2-A2P30A... | CDP2-A1P-C ⑦ CDP2-A2P-C |

AC Coil Codes

| AC Coil Code | Voltage Range |
|--------------|---------------|
| | 60 Hz |
| 24 | 24V |
| 120 | 120V |
| 220W | 208-240V |
| 277 | 277V |

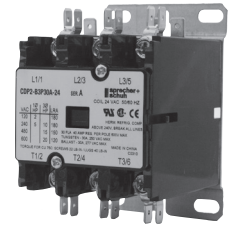
Ordering Instructions

| | |
|----------------------------|------------------------------------|
| Specify Catalog Number | |
| Replace (*) with Coil Code | See Coil Codes on this page |

- ① 25A contactors only available by special order. Contact your Sprecher +Schuh representative.
- ② 240V rating also applies to 277V applications.
- ③ Box Power Lugs are supplied as standard. Screw terminals are available on the power connections by special order only in quantity.
- ④ 1 and 2 Pole, 25 and 30A contactors supplied without cover. See Accessories for cover options.
- ⑤ Screw Power Terminals are supplied standard on 25 and 30A contactors. Box Lugs available by special order only in quantity.
- ⑥ 1-Pole (1-pole plus) contactors include a shunt for termination and feed-thru of neutral.
- ⑦ 40 Amp contactors are supplied with cover as standard.

Three Pole Definite Purpose Contactors with AC Coil (Open Type only)

| Full Load Amps | Locked Rotor Amps | | | Resistive Amps ② | Maximum Horsepower ② | | | | | | Catalog Number | Std. Pkg. | |
|----------------|-------------------|------|------|------------------|----------------------|-------|-------|------|------|------|----------------|-----------------|------|
| | | | | | 1Ø | | | 3Ø | | | | | |
| | 240V ② | 480V | 600V | | 120V | 200 | 240V | 200V | 240V | 480V | | | 600V |
| 30 ① | 180 | 150 | 120 | 40 | 2 | ~ | 5 | 10 | 10 | 15 | 20 | CDP2-B3P30A-* ④ | 25 |
| 40 | 240 | 200 | 160 | 50 | 3 | ~ | 7-1/2 | 10 | 10 | 20 | 25 | CDP2-B3P40A-* ⑤ | 25 |
| 50 | 300 | 250 | 200 | 65 | 3 | 7-1/2 | 10 | 15 | 15 | 25 | 25 | CDP2-C3P50A-* | 15 |
| 60 | 360 | 300 | 240 | 75 | 5 | 7-1/2 | 10 | 25 | 25 | 30 | 30 | CDP2-C3P60A-* | 15 |
| 75 | 450 | 375 | 300 | 93 | 5 | 10 | 15 | 20 | 25 | 40 | 40 | CDP2-D3P75A-* | 1 |
| 90 | 540 | 450 | 360 | 120 | 7-1/2 | 15 | 20 | 25 | 30 | 50 | 50 | CDP2-D3P90A-* | 1 |



Series CDP2 3-pole contactor

Auxiliary Contacts for 3 Pole Contactors ⑦

| Auxiliary | Description | Circuit Diagram | Catalog Number |
|-----------|---|-----------------|--|
| | Two pole Auxiliary Contact Block (1-NO / 1-NC) - Side mount with quick connect stabs for 25...40A, 3 pole contactors for 50...90A, 3 pole contactors | | CDP2-BE-11 ⑥ CDP2-CD-11 ⑥ |
| | One pole Auxiliary Contact Block (SPDT) - Side mount with quick connect stabs for 25...40A, 3 or 4 pole contactors | | |

AC Coil Codes

| AC Coil Code | Voltage Range |
|--------------|---------------|
| | 60 Hz |
| 24 | 24V |
| 120 | 120V |
| 220W | 208-240V |
| 277 | 277V |
| 480 | 480V |

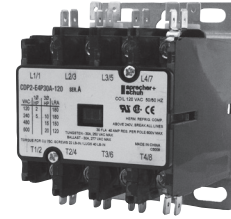
Ordering Instructions

| | |
|----------------------------|-----------------------------|
| Specify Catalog Number | |
| Replace (*) with Coil Code | See Coil Codes on this page |

- ① 25A contactors available by special order. Contact your Sprecher + Schuh representative.
- ② 240V rating also applies to 277V applications.
- ③ Box lugs are supplied as standard. Screw terminals are available on the power connections by special order only in quantity.
- ④ Screw power terminals are supplied standard on 25 and 30A contactors. Box Lugs available by special order only in quantity.
- ⑤ Meets NEMA Standard B600. See page A7 for technical details.
- ⑥ Meets NEMA Standard B600 EXCEPT has 10 A continuous current rating.
- ⑦ A maximum of two auxiliary contacts can be installed on the contactor, one contact block on each side.


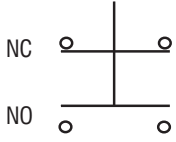
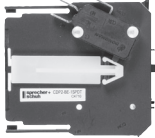
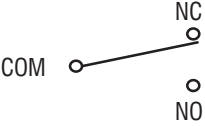
Four Pole Definite Purpose Contactors With AC Coil (Open Type only)

| Full Load Amps | Locked Rotor Amps | | | Resistive Amps ② | Maximum Horsepower ③ | | | | | Catalog Number | Std. Pkg. |
|----------------|-------------------|------|------|------------------|----------------------|-------|------|------|------|-----------------|-----------|
| | | | | | 1Ø | | 3Ø | | | | |
| | 240V ④ | 480V | 600V | | 120V | 240V | 200V | 240V | 480V | | |
| 30 ① | 180 | 150 | 120 | 40 | 2 | 5 | 10 | 10 | 15 | CDP2-E4P30A-* ⑤ | 20 |
| 40 | 240 | 200 | 160 | 50 | 3 | 7-1/2 | 10 | 10 | 20 | CDP2-E4P40A-* ⑥ | 20 |



Series CDP2 4-pole contactor

Auxiliary Contacts for 4 Pole Contactors ⑥

| Auxiliary | Description | Circuit Diagram | Catalog Number |
|---|---|---|----------------------|
|  | Two pole Auxiliary Contact Block (1-NO / 1-NC) - Side mount with quick connect stabs for all 4 pole contactors |  | CDP2-BE-11 |
|  | One pole Auxiliary Contact Block (SPDT) - Side mount with quick connect stabs for all 4 pole contactors |  | CDP2-BE-1SPDT |

A.C. Coil Codes

| AC Coil Code | Voltage Range |
|--------------|---------------|
| | 60 Hz |
| 24 | 24V |
| 120 | 120V |
| 220W | 208-240V |
| 277 | 277V |
| 480 | 480V |

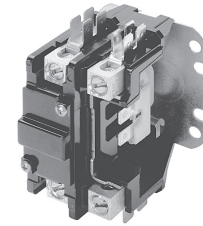
Ordering Instructions

| | |
|----------------------------|-----------------------------|
| Specify Catalog Number | |
| Replace (*) with Coil Code | See Coil Codes on this page |

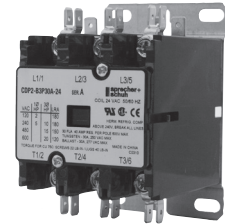
- ① 25A contactors available by special order. Contact your Sprecher + Schuh representative.
- ② 240V rating also applies to 277V applications.
- ③ Box Power Lugs are supplied as standard. Screw terminals are available on the power connections by special order only in quantity.
- ④ Screw per terminals are supplied standard on 25 and 30A contactors. Box Lugs available by special order only in quantity.
- ⑤ A maximum of two auxiliary contacts can be installed on the contactor, one contact block on each side.

Definite Purpose Lighting Contactors with AC Coil (Open Type only)

| Tungsten Rating (Amps) | Ballast Rating (Amps) | Number of Poles | Standard Auxiliary Contacts | | Electrically Held |
|------------------------|-----------------------|-----------------|-----------------------------|----|----------------------|
| | | | NO | NC | Open Type |
| | | | | | Catalog Number |
| 30 | 40 | 1 | 0 | 0 | CDP2-A1P30A-* |
| 40 | 40 | 1 | 0 | 0 | CDP2-A1P40A-* |
| 30 | 40 | 2 | 0 | 0 | CDP2-A2P30A-* |
| 40 | 40 | 2 | 0 | 0 | CDP2-A2P40A-* |
| 30 | 40 | 3 | 0 | 0 | CDP2-B3P30A-* |
| 40 | 40 | 3 | 0 | 0 | CDP2-B3P40A-* |
| 30 | 40 | 4 | 0 | 0 | CDP2-E4P30A-* |
| 40 | 40 | 4 | 0 | 0 | CDP2-E4P40A-* |



Series CDP2 1-pole contactor



Series CDP2 3-pole contactor

Description

Sprecher + Schuh Definite Purpose contactors can be used to control a mixture of lighting loads. These contactors are well suited to handle the high inrush currents typical of this application as well as other non-motor (resistive) loads.

Lamps can basically be divided into three categories:

- Tungsten Filament Lamps
 - General purpose incandescent
 - Special purpose incandescent
 - Infrared
 - Sodium Iodine
- Discharge Lamps (with Ballast)
 - Fluorescent lamps - Mercury vapor
 - High/low pressure sodium
 - Quartz
 - Halogen metal-vapor
- Mixed Light Lamps

In Application...

The tungsten filaments of incandescent lamps have a very low ohmic resistance when cold. As a result, the closing current is very high but also very short. The closing current of discharge lamps (lighting with ballast) is highly inductive (due to series-connected transformers or chokes), and its duration depends on the lamp type.

Electrically held contactors

Electrically held contactors are available for use where the control signal is activated by a timer or other maintained electrical signal. The coil is energized as long as the contactor is closed. This design is well suited for applications where lights are operated frequently or where the control panel is in a remote location.

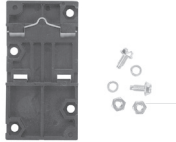

AC Coil Codes

| AC Coil Code | Voltage Range |
|--------------|---------------|
| | 60 Hz |
| 24 | 24V |
| 120 | 120V |
| 220W | 208-240V |
| 277 | 277V |
| 480 | 480V |

Ordering Instructions

| | |
|----------------------------|------------------------------------|
| Specify Catalog Number | |
| Replace (*) with Coil Code | See Coil Codes on this page |

Accessories

| Auxiliary | Description | For use with... | Catalog Number |
|---|--|------------------------------------|------------------------|
|  | <p>DIN-rail Adaptor - Attaches to the universal mounting plate of 1-, 2-, 3- and 4-pole contactors 25...40 Amps.</p> | <p>CDP2-A1P...B3P CDP2-E4P</p> | <p>CDP2-DRA</p> |
|  | <p>Mechanical Interlock - Can be combined with electrical interlocks on 3-pole and 4-pole contactors as required.</p> | <p>CDP2-B3P CDP2-E4P</p> | <p>CDP2-MK1</p> |

Short-Circuit Coordination

| | | 25-30A 1+2-Pole | 40A 1+2-Pole | 25-30A 3-Pole | 40A 3-Pole | 50-90A 3-Pole | 25-30A 4-Pole | 40A 4-Pole |
|--|--------------------|--------------------|-----------------|------------------|---------------|------------------|------------------|---------------|
| Standard Short Circuit Rating | [kA] | 5 | 5 | 5 | 5 | 5 | 5 | 5 |
| High Current Short Circuit Rating | | | | | | | | |
| Class J-fuses | | | | | | | | |
| Available fault current | [kA] | 100 | 100 | 100 | 100 | ❶ | 100 | 100 |
| cUL Max. fuse (600V) | [A] | 60 | 100 | 60 | 100 | ❶ | 50 | 100 |
| Enclosure Minimum | [in ³] | 96 | 96 | 144 | 144 | ❶ | 144 | 144 |
| Molded Case Circuit Breaker | | | | | | | | |
| Available fault current | [kA] | 100 | 100 | 100 | 100 | ❶ | 100 | 100 |
| cUL Max. breaker (480V) | [A] | 80 | 80 | 80 | 100 | ❶ | 80 | 100 |
| Enclosure Minimum | [in ³] | 144 | 144 | 144 | 144 | ❶ | 144 | 144 |

Service Life

| | | | | | | | |
|---------------------------------|-----------|-----------|-----------|-----------|---------|-----------|-----------|
| Mechanical (operations) | 1,000,000 | 1,000,000 | 1,000,000 | 1,000,000 | 500,000 | 1,000,000 | 1,000,000 |
| Electrical (operations) | | | | | | | |
| Resistive Load (UL) | 250,000 | 250,000 | 250,000 | 250,000 | 250,000 | 250,000 | 250,000 |
| Inductive Load (UL) | 100,000 | 100,000 | 100,000 | 100,000 | 100,000 | 100,000 | 100,000 |
| Inductive Load (Self-certified) | 200,000 | 200,000 | 200,000 | 200,000 | 200,000 | 200,000 | 200,000 |

Data for Surge Suppression Selection

| Contactor Configuration (All voltages) | Resistor | Capacitor | Snubber ❷ |
|---|----------|-----------------|--------------|
| 1 Pole | 680 ohms | 0.47 n <i>f</i> | RCS1M-6 |
| 2 Pole | 330 ohms | 0.47 n <i>f</i> | RCS1K-6 |
| 3P 30/40 Amp | 220 ohms | 0.47 n <i>f</i> | RCS1A-6 |
| 4P 30 Amp | 220 ohms | 0.47 n <i>f</i> | RCS1A-6 |
| 3P 50/60 Amp | 150 ohms | 0.47 n <i>f</i> | RCS1H-6 |
| 3P 75/90 Amp | 68 ohms | 0.47 u <i>f</i> | RCS1E-6 |

- ❶ UL testing not complete at the time of this printing.
 ❷ Recommended snubbers from RK Electric.

General Specifications

| | | CDP2 | CDP2 | CDP2 | CDP2 | CDP2 |
|--|---------------|---|-----------------------------|-----------------------------|-----------------------------|-----------------------------|
| Approvals | | 25...40A, 1 & 2 pole | 25...40A, 3 pole | 50...60A, 3 pole | 75...90A, 3 pole | 25...40A, 4 pole |
| UL | | UL508, Guide No. NLDX2-File No. E3125 | | | | |
| CSA | | C22.2 No. 14, Class; 321104-File No. 210566 (75A, 3 pole / C22.2 No. 14, Class: 122201 - File No. 210566) | | | | |
| CE / SEMKO | | Certified EN60947-4-1: 2010 | | | | |
| IEC | | IEC 947-4-1 (Except 50A...90A, 3 pole) | | | | |
| Line and Load Terminals | | #10 - 32 screw or box lug | #10 - 32 screw or box lug | Box lug | Box lug | #10 - 32 screw or box lug |
| Wire Size (min/max) | | | | | | |
| #10 - 32 screw (all 25A & 30A) | [AWG] | 16 - 8 ① | 16 - 8 ① | ~ | ~ | 16 - 8 ① |
| Box Lug (≥40A) | [AWG] | 14 - 4 Cu/Al | 14 - 4 Cu/Al | 14 - 2 Cu/Al | 14 - 1/0 Cu/Al | 14 - 4 Cu/Al |
| Recommended Tightening Torque | | | | | | |
| #10 - 32 screw (all 25A & 30A devices) | | 22 lbs-in | 22 lbs-in | ~ | ~ | 22 lbs-in |
| Box Lug (40A devices only) | | 40 lbs-in | 40 lbs-in | 50 lbs-in | 50 lbs-in | 40 lbs-in |
| Quick Connects | | | | | | |
| Coil Terminals | | Dual .250 QC (2) | Quad .250 QC (2) | #6-32 screw 7 .250 QC (2) | #6-32 screw 7 .250 QC (2) | Dual .250 QC (2) |
| Power Terminals | | 1 pole: Quad .250 QC 2 pole: Quad .250 QC | Dual .250 QC (2) | Dual .250 QC (2) | Dual .250 QC (2) | Dual .250 QC (2) |
| Arc Cover | | Optional | Standard | Standard | Standard | Standard |
| Insulation System | | 130°C Class B | | | | |
| Temperature Range | | [°C] | | -40°C to +65°C | | |
| | | [°F] | | -40°F to +150°F | | |
| Weight | | 1 pole 0.5 lb 2 pole: 0.6 lb | 1 lb | 2 lbs | 4 lbs | 1.5 lbs. |
| UL/CSA Ratings for 25A special order contactors | | 1 Pole | 2 Pole | 3 Pole | | |
| Locked Rotor Amps | 240/277 V [A] | 150 | 150 | 150 | | |
| | 480V [A] | 125 | 125 | 125 | | |
| | 600V [A] | 100 | 100 | 100 | | |
| Resistive Amps | [A] | 35 | 35 | 35 | | |
| Max. HP | 1∅ 120 V [HP] | 2 | 2 | 2 | | |
| | 240 V [HP] | 3 | 3 | 3 | | |
| 3∅ | 200 V [HP] | ~ | ~ | 7.5 | | |
| | 230 V [HP] | ~ | ~ | 7.5 | | |
| | 460 V [HP] | ~ | ~ | 10 | | |
| | 575 V [HP] | ~ | ~ | 10 | | |
| Coil Data | | | | | | |
| 1 Pole Contactors (25...40A) | | 24V Coils | 120V Coils | 220W Coils | 277V Coils | 480V Coils |
| Normal Coil Voltage | [V] | 24 | 120 | 208 / 240 | 277 | ~ |
| Pickup voltage (min.) | [V] | 18 | 88 | 177 | 221 | ~ |
| Drop-out/Voltage Range | [V] | 6...15 | 20...70 | 40...140 | 50...165 | ~ |
| Nominal Inrush | | | | | | ~ |
| 50 Hz | [VA] | 22.5 | 22.5 | 22.5 | 22.5 | ~ |
| 60Hz | [VA] | 20 | 20 | 20 | 20 | ~ |
| Nominal Seal-in | | | | | | ~ |
| 50 Hz | [VA] | 7 | 7 | 7 | 7 | ~ |
| 60 Hz | [VA] | 5.25 | 5.25 | 5.25 | 5.25 | ~ |
| Nominal DC Resistance | [Ω] | 16.5 | 420 | 1850 | 2650 | ~ |
| 2 Pole Contactors (25...40A) | | | | | | ~ |
| Normal Coil Voltage | [V] | 24 | 120 | 208 / 240 | 277 | ~ |
| Pickup voltage (min.) | [V] | 18 | 88 | 177 | 221 | ~ |
| Drop-out Voltage Range | [V] | 6...15 | 20...70 | 40...140 | 50...165 | ~ |
| Nominal Inrush | | | | | | ~ |
| 50 Hz | [VA] | 37 | 37 | 37 | 37 | ~ |
| 60Hz | [VA] | 35 | 35 | 35 | 35 | ~ |
| Nominal Seal-in | | | | | | ~ |
| 50 Hz | [VA] | 8 | 8 | 8 | 8 | ~ |
| 60 Hz | [VA] | 7 | 7 | 7 | 7 | ~ |
| Nominal DC Resistance | [Ω] | 11 | 250 | 1000 | 1600 | ~ |

① Stranding must be split for #8 wire.

| Coil Data (continued) | | 50/60 Hz 24V Coils | 110 - 50 Hz 120 - 60 Hz 120V Coils | 220 - 50 Hz 208-240 - 60 Hz 220W Coils | 277 - 60 Hz 277V Coils | 440 - 50 Hz 480 - 60 Hz 480V Coils |
|-------------------------------------|------|-------------------------------|---|---|-----------------------------------|---|
| 3 Pole Contactors (25...40A) | | | | | | |
| Nominal Coil Voltage | [V] | 24 | 120 | 208-240 | 277 | 480 |
| Pickup Voltage (min.) | [V] | 18 | 88 | 177 | 220 | 384 |
| Drop-out Voltage Range | [V] | 6...15 | 20...70 | 40...140 | 50...165 | 150...270 |
| Nominal Inrush | | | | | | |
| 50 Hz | [VA] | 65 | 65 | 65 | 65 | 65 |
| 60Hz | [VA] | 60 | 60 | 60 | 60 | 53 |
| Nominal Seal-in | | | | | | |
| 50 Hz | [VA] | 7.5 | 7.5 | 7.5 | 7.5 | 7.5 |
| 60 Hz | [VA] | 6 | 6 | 6 | 6 | 6 |
| Nominal DC Resistance | [Ω] | 7 | 180 | 720 | 950 | 3100 |
| 3 Pole Contactors (50...40A) | | | | | | |
| Nominal Coil Voltage | [V] | 24 | 120 | 208-240 | 277 | 480 |
| Pickup Voltage (min.) | [V] | 18 | 88 | 177 | 221 | 374 |
| Drop-out Voltage Range | [V] | 6...15 | 20...70 | 40...140 | 65...185 | 120...286 |
| Nominal Inrush | | | | | | |
| 50 Hz | [VA] | 114 | 108 | 126 | 120 | 98 |
| 60Hz | [VA] | 105 | 105 | 125 | 115 | 108 |
| Nominal Seal-in | | | | | | |
| 50 Hz | [VA] | 13 | 12 | 14 | 13 | 10 |
| 60 Hz | [VA] | 12 | 11 | 13 | 1 | 10 |
| Nominal DC Resistance | [Ω] | 4 | 52 | 282 | 453 | 1390 |
| 3 Pole Contactors (75...90A) | | | | | | |
| Nominal Coil Voltage | [V] | 24 | 120 | 208-240 | 277 | 480 |
| Pickup Voltage (min.) | [V] | 22 | 95 | 177 | 235 | 384 |
| Drop-out Voltage Range | [V] | 6...15 | 20...70 | 40...110 | 65...185 | 150...270 |
| Nominal Inrush | [Ω] | | | | | |
| 50 Hz | [VA] | 225 | 225 | 280 | 210 | 210 |
| 60Hz | [VA] | 222 | 220 | 270 | 202 | 202 |
| Nominal Seal-in | | | | | | |
| 50 Hz | [VA] | 22 | 19 | 27 | 27 | 19 |
| 60 Hz | [VA] | 21 | 18 | 25 | 25 | 18 |
| Nominal DC Resistance | [Ω] | .66 | 15.8 | 50 | 93 | 258 |
| 4 Pole Contactors (25...40A) | | | | | | |
| Nominal Coil Voltage | [V] | 24 | 120 | 208-240 | 277 | 480 |
| Pickup voltage (min.) | [V] | 18 | 88 | 177 | 220 | 384 |
| Drop-out Voltage Range | [V] | 6...15 | 20...70 | 40...140 | 65...185 | 15...270 |
| Nominal Inrush | | | | | | |
| 50 Hz | [VA] | 62 | 62 | 62 | 62 | 67 |
| 60 Hz | [VA] | 59 | 59 | 59 | 59 | 60 |
| Nominal Seal-in | | | | | | |
| 50 Hz | [VA] | 9 | 9 | 9 | 8 | 9 |
| 60 Hz | [VA] | 7 | 7 | 7 | 6.5 | 7 |
| Nominal DC Resistance | [Ω] | 6 | 150 | 600 | 750 | 2400 |
| Operating Times | | | | | | |
| AC: 50Hz, 60hz | | | | | | |
| Pick-up [ms] | | 0...20 | 0...20 | 0...20 | 0...20 | 0...20 |
| Drop-out [ms] | | 0...30 | 0...30 | 0...30 | 0...30 | 0...30 |

Auxiliary Contacts

2 Pole (NO/NC) - Single Circuit Contact Rating

| Voltage Rating | Rating | | | | |
|----------------|------------|-----|-----|------|-----|
| | 120 | 240 | 480 | 600 | |
| Amperes | Break | 3.0 | 1.5 | 0.75 | 0.6 |
| | Make | 30 | 15 | 7.5 | 6 |
| | Continuous | 10 | 10 | 10 | 10 |

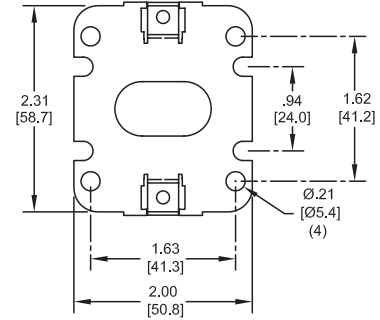
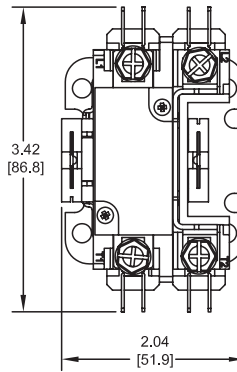
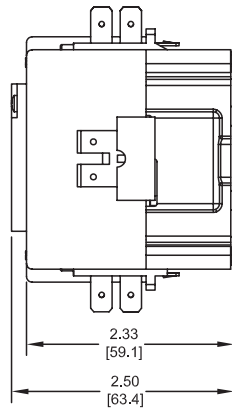
SPDT

10A, 1/3 HP, 125 or 250V AC; 1/2A, 125 V DC; 1/4A, 250V DC; 4A, 120V AC on Lamp Load

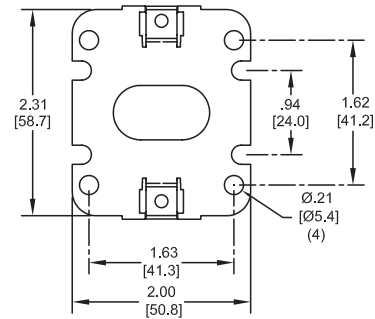
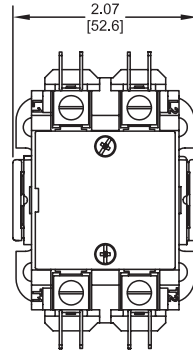
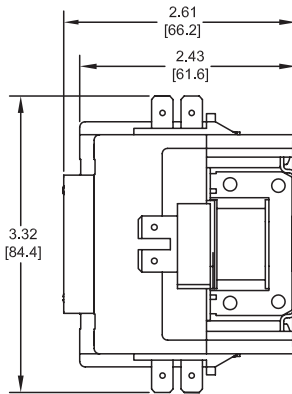
CDP2 25...40A, 1 & 2 Pole

Dimensions are in inches (millimeters). Dimensions not intended for manufacturing purposes.

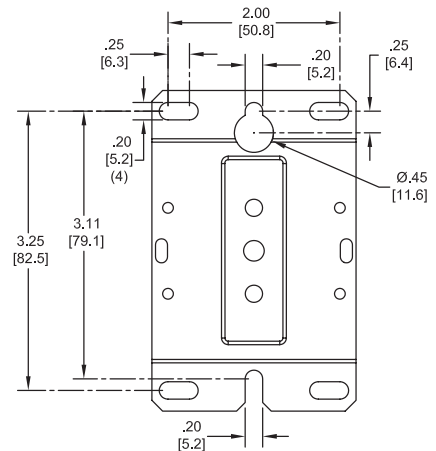
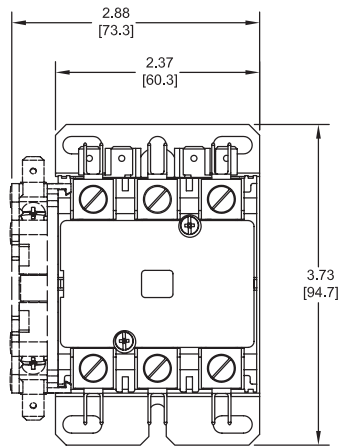
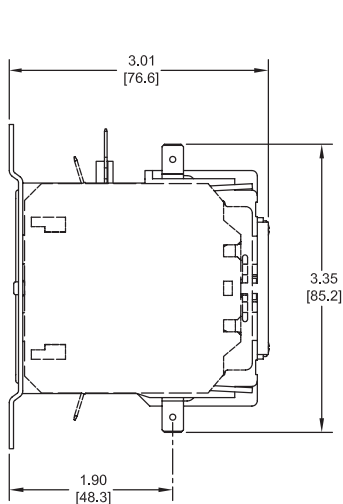
1-Pole



2-Pole

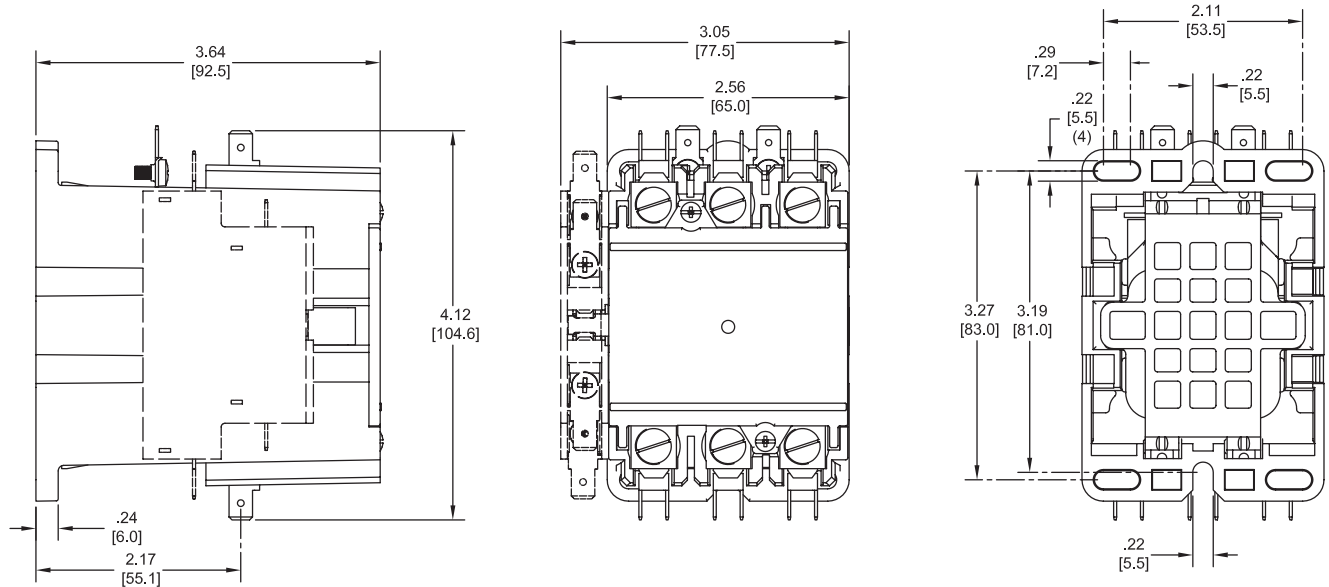


CDP2 25...40A, 3 Pole with Auxiliary

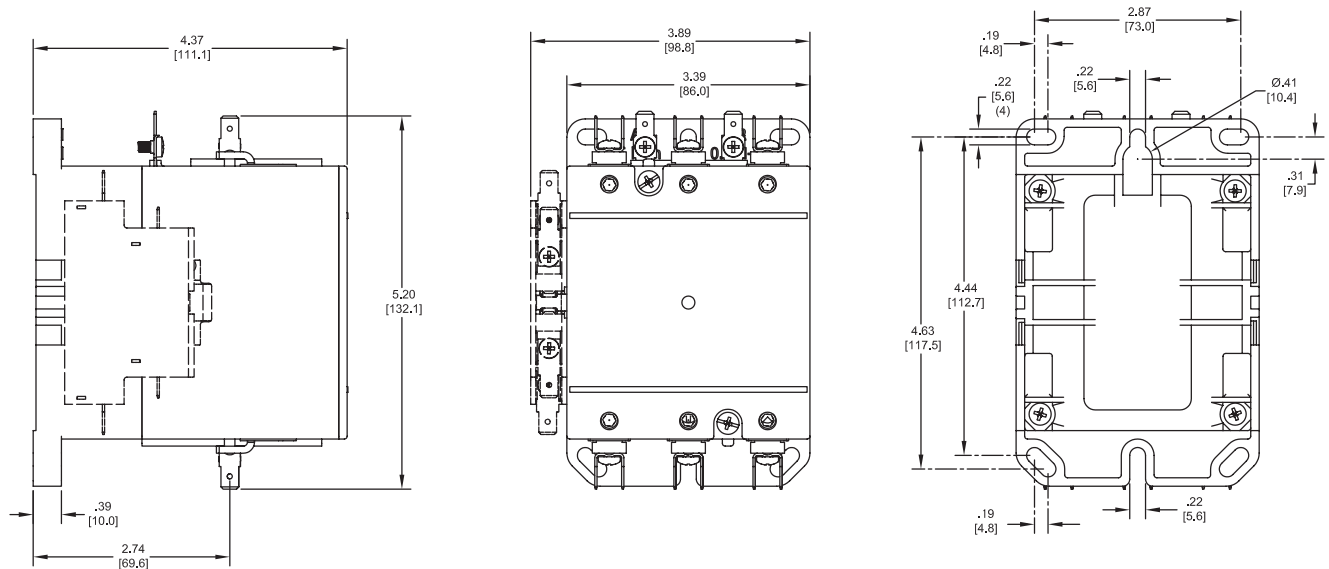


CDP2 50...60A, 3 Pole with Auxiliary

Dimensions are in inches (millimeters). Dimensions not intended for manufacturing purposes.

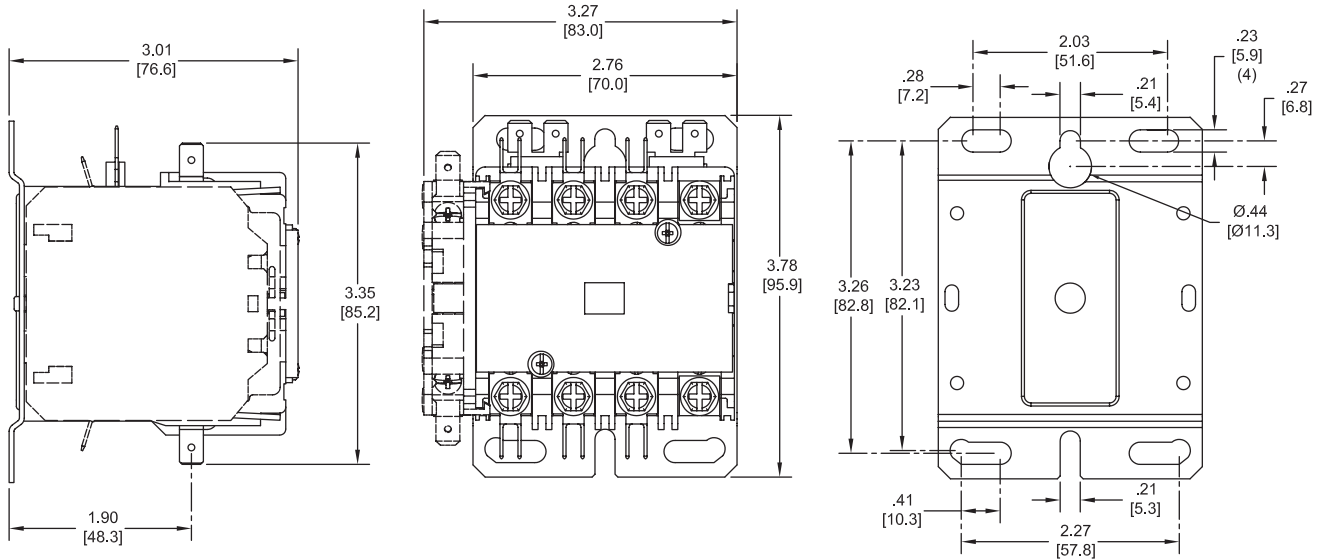


CDP2 75...90A, 3 Pole with Auxiliary

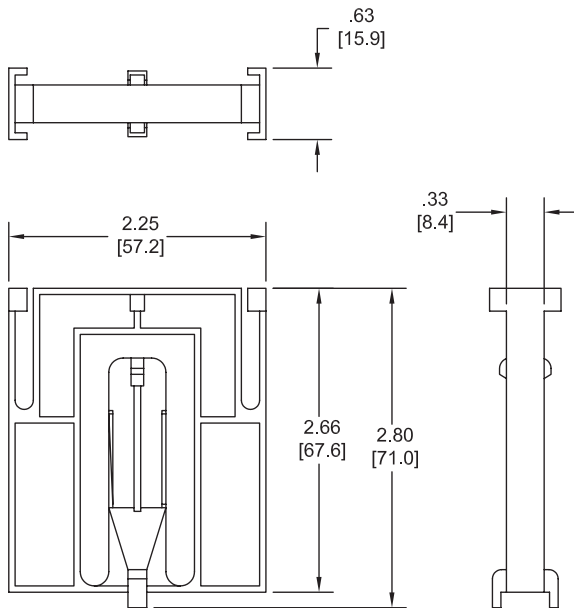


CDP2 25...40A, 4 Pole with Auxiliary

Dimensions are in inches (millimeters). Dimensions not intended for manufacturing purposes.



CDP2-MK1 Mechanical Interlock



Terminations

