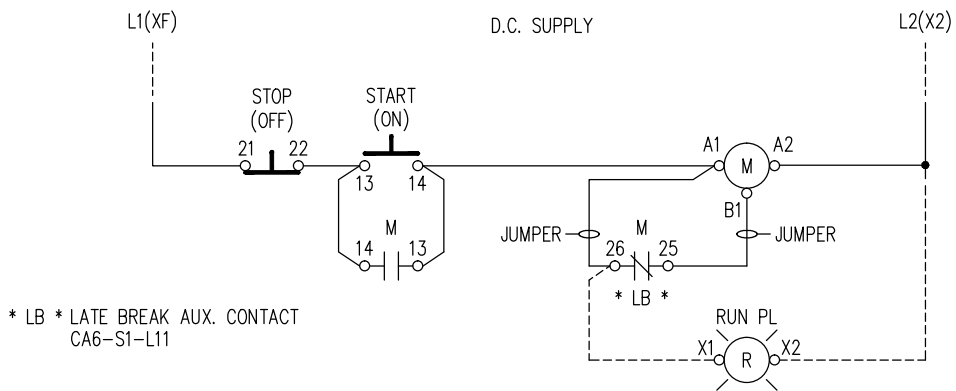


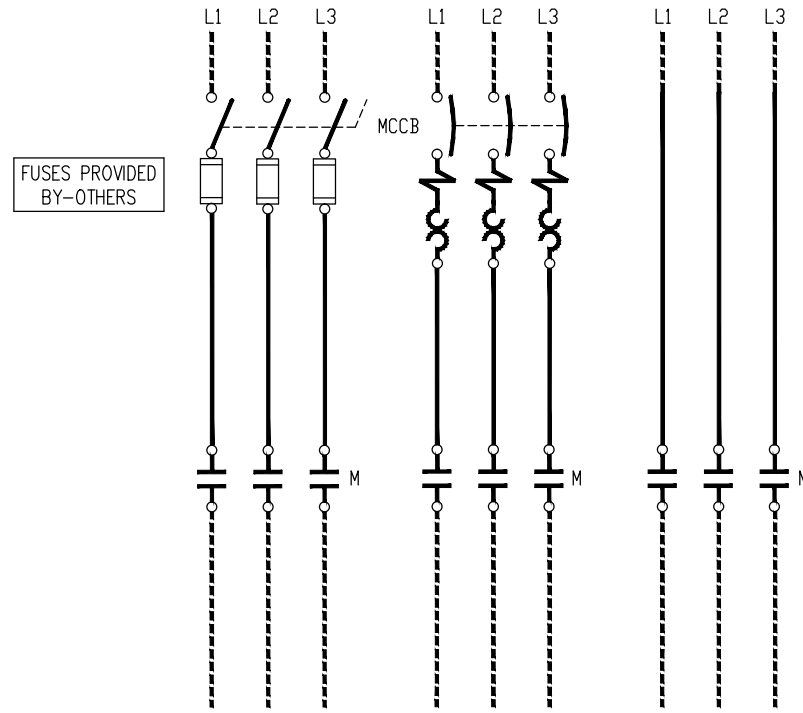
* LB * LATE BREAK AUX. CONTACT
CA6-S1-L11

2-WIRE CONTROL CA6-115 THRU CA6-180 CONVENTIONAL COIL



* LB * LATE BREAK AUX. CONTACT
CA6-S1-L11

START-STOP PUSHBUTTON CONTROL CA6-115 THRU CA6-180 CONVENTIONAL COIL



FUSES PROVIDED
BY-OTHERS

COMB. FUS./NON FUS. DISC. COMB. THERMAL-MAG NON COMBINATION

3	GENERAL REVISION	4-24-12	MR
REV	DESCRIPTION	DATE	APP'D
DESIGNED S+S	SERIES CA6 CONTACTORS FULL VOLTAGE NON REVERSING CA6-115 THRU 180 CONVENTIONAL CONTACTOR W/ DC COIL	sprecher+schuh HOUSTON, TEXAS DWG. NO. CA WS-100-60 SERIES 100	
DRAWN ER			
APPROVED JR			
DATE 12-16-93			